

www.tactixtools.com



POWER TOOLS ACCESSORIES CATALOGUE

2024/25



POWER TOOLS ACCESSORIES

A Comprehensive Range Suitable For TACTIX



For your safety, protective equipment as above are recommended to be worn during use.



Drilling Products

Drill Bits In Eco-Friendly Poly Bag	1-2
HSS Twist Drill Bits	3-7
Taps & Dies	8
Step Drill Bits	9-10
Concrete Drill Bits	11
Multi-Purpose Drill Bits & Glass Drill Bits	12
SDS Drill Bits & Chisels	13-14
Garden Auger Drill Bits	15
Wood Drill Bits & Wood Spades	16
Auger Drill Bits	17
Forstner Drill Bits & Counter Sink Bit	17-18
Pilot Drill & Carpentry Tools	18
Drills & Bits Set	19-24
Impact Bits Set	25-26
Router Bits	27-28

Saw Blades & Hole Saws

Diamond Blades	29-31
Multi-purpose Diamond Blades & Diamond Grinding Wheel	32
Diamond Coated Hole Saws	33-34
Circular Saw Blades	35-36
Grinding & Cut Off Wheels	37-38
Jig Saw Blades & Reciprocating Saw Blades	39-44
Bi-metal Hole Saws	45
Arbors For Hole Saws & Carbide Hole Saws	46
Multi Saw Blades	47-49

Abrasives

Sanding Discs, Sheets & Belts	50-51
Polishing Accessories	52-53
Wire Brushes	54-58
Flap Disc & Rotary Rasp	59
Drill Brushes	60

Power Bits & Accessories

Driving Bits & Accessories	61-62
Impact bits & Accessories	63-65
Power Bits sets	66-68

Welding Accessories & Consumables

Welding Accessories	69-73
Welding Consumables	74

Drill Bits Display & Promotions

Drill Bits Display & Promotions	75
---------------------------------	----



HSS STEP DRILL BITS



HSS-COBALT STEP DRILL PRO GRADE

- Industrial grade cobalt M35 high speed steel
- Automatically debur holes
- 4x long using life time
- For drilling multiple hole sizes with one bit in steel, brass, stainless steel, copper, aluminum, wood and plastic
- Black nitriding for extra hardness and rust prevention

Item No.	Shank DIA.	Holes	Size	EAN 69426292 (A) 69743345 (B)	Inner	Outer
416001	6.35 mm (1/4 in.)	9	ø 4-12 mm	A + 2308 5	12	48
416005	6.35 mm (1/4 in.)	9	ø 4-20 mm	A + 2310 8	12	48
416015	6.35 mm (1/4 in.)	8	ø 6-20 mm	A + 2315 3	12	48
416017	6.35 mm (1/4 in.)	10	ø 6-25 mm	B + 5335 5	12	48
416019	13.0 mm (9/16 in.)	13	ø 5-35 mm	A + 2317 7	12	48
416027	6.35 mm (1/4 in.)	13	ø 1/8-1/2 in.	A + 2321 4	12	48
416033	6.35 mm (1/4 in.)	12	ø 3/16-7/8 in.	A + 2324 5	12	48
416035	9.5 mm (3/8 in.)	10	ø 1/4-1-3/8 in.	A + 2325 2	12	48

ø 4-12 mm

- 4 mm
- ← 5 mm
- ← 6 mm
- ← 7 mm
- ← 8 mm
- ← 9 mm
- ← 10 mm
- ← 11 mm
- ← 12 mm



416001

ø 4-20 mm

- 4 mm
- ← 6 mm
- ← 8 mm
- ← 10 mm
- ← 12 mm
- ← 14 mm
- ← 16 mm
- ← 18 mm
- ← 20 mm



416005

ø 6-20 mm

- 6 mm
- ← 8 mm
- ← 10 mm
- ← 12 mm
- ← 14 mm
- ← 16 mm
- ← 18 mm
- ← 20 mm



416015

ø 6-25 mm

- 6 mm
- ← 8 mm
- ← 10 mm
- ← 12 mm
- ← 14 mm
- ← 16 mm
- ← 18 mm
- ← 20 mm
- ← 22 mm
- ← 25 mm



416017

ø 5-35 mm

- 5 mm
- ← 7 mm
- ← 10 mm
- ← 12 mm
- ← 15 mm
- ← 17 mm
- ← 20 mm
- ← 22 mm
- ← 25 mm
- ← 27 mm
- ← 30 mm
- ← 32 mm
- ← 35 mm



416019

ø 1/8-1/2 in.

- 1/8 in.
- ← 5/32 in.
- ← 3/16 in.
- ← 7/32 in.
- ← 1/4 in.
- ← 9/32 in.
- ← 5/16 in.
- ← 11/32 in.
- ← 3/8 in.
- ← 13/32 in.
- ← 7/16 in.
- ← 15/32 in.
- ← 1/2 in.



416027

ø 3/16-7/8 in.

- 3/16 in.
- ← 1/4 in.
- ← 5/16 in.
- ← 3/8 in.
- ← 7/16 in.
- ← 1/2 in.
- ← 9/16 in.
- ← 5/8 in.
- ← 3/8 in.
- ← 11/16 in.
- ← 3/4 in.
- ← 13/16 in.
- ← 7/8 in.



416033

ø 1/4-1-3/8 in.

- 1/4 in.
- ← 3/8 in.
- ← 1/2 in.
- ← 5/8 in.
- ← 3/4 in.
- ← 7/8 in.
- ← 1 in.
- ← 1-1/8 in.
- ← 1-1/4 in.
- ← 1-3/8 in.



416035

3 PC HSS STEP DRILL-METRIC

416061

- High speed steel
- Titanium coating for rust prevention
- Automatically debur holes
- For drilling multiple hole sizes with one bit in steel, brass, copper, aluminum, wood and plastic



Item No.	Shank DIA.	Size	EAN 69743345+	Inner	Outer
416061	6.35 mm (1/4 in.)	ø 4-12 / ø 4-20 / ø 4-32 mm	5336 2	6	24



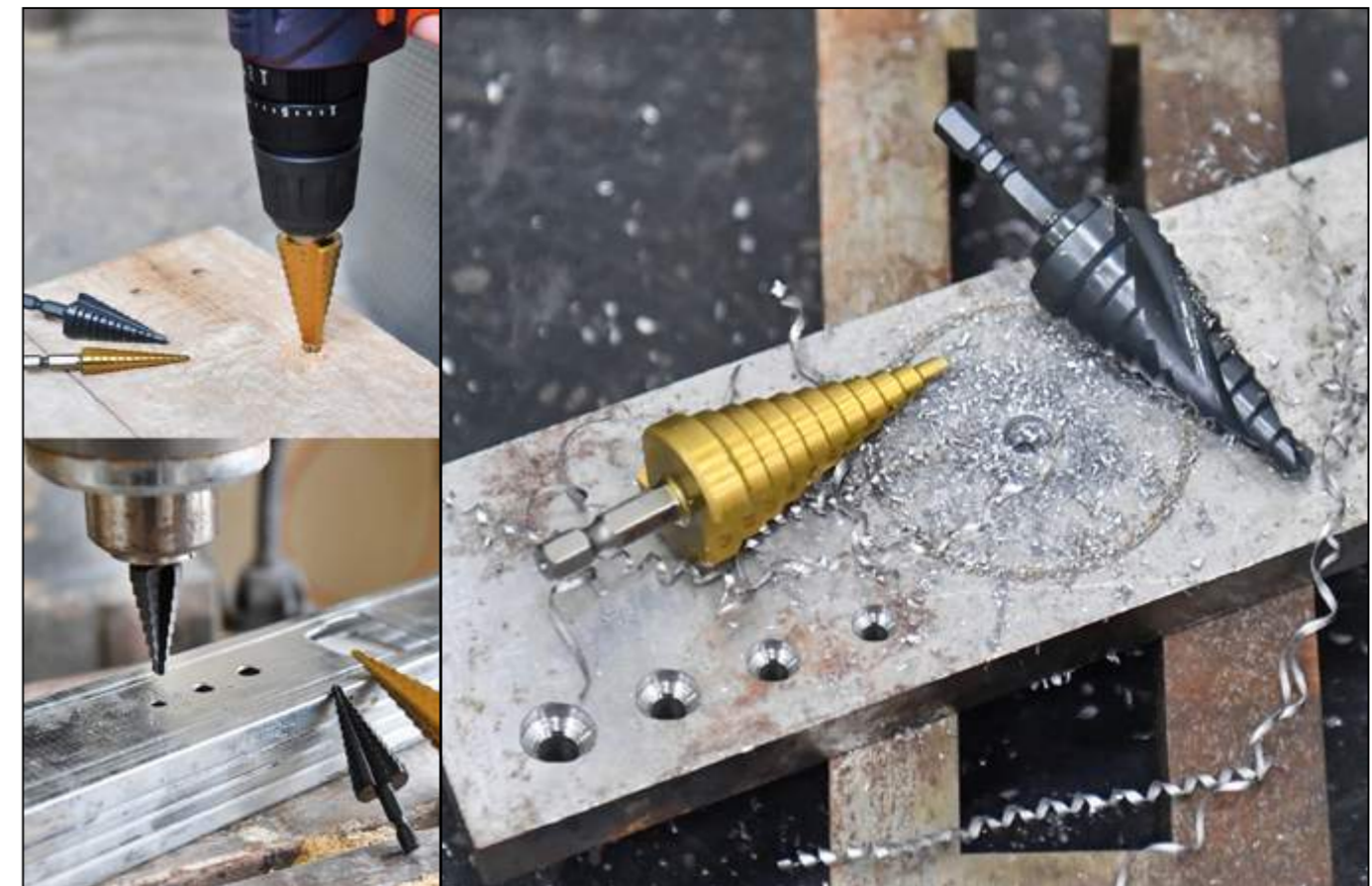
3 PC HSS STEP DRILL-SAE

416063

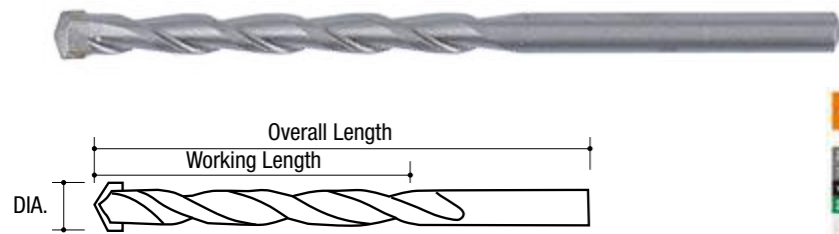
- High speed steel
- Titanium coating for rust prevention
- Automatically debur holes
- For drilling multiple hole sizes with one bit in steel, brass, copper, aluminum, wood and plastic



Item No.	Shank DIA.	Size	EAN 69743345+	Inner	Outer
416063	6.35 mm (1/4 in.)	ø 3/16-1/2 / ø 1/4-3/4 / ø 1/8-1/2 in.	5337 9	6	24



CONCRETE DRILL BITS



- High carbon steel body with YG8 carbide tip
- For concrete, reinforced concrete, brick, block and masonry



Item No.	DIA.	Working Length	Overall Length	EAN 69426292+	Inner	Outer
410501	2 PC 3.0 mm	36 mm	60 mm	2008 4	20	200
410503	4.0 mm	45 mm	75 mm	2009 1	20	200
410505	5.0 mm	51 mm	85 mm	2010 7	20	200
410506	5.5 mm	55 mm	100 mm	5458 4	20	120
410507	6.0 mm	60 mm	100 mm	2011 4	20	120
410508	6.5 mm	60 mm	100 mm	5459 1	20	120
410509	7.0 mm	60 mm	100 mm	2012 1	20	120
410511	8.0 mm	72 mm	120 mm	2013 8	20	120
410513	9.0 mm	72 mm	120 mm	2014 5	20	120
410515	10.0 mm	72 mm	120 mm	2015 2	20	120
410517	11.0 mm	90 mm	150 mm	2016 9	20	120
410519	12.0 mm	90 mm	150 mm	2017 6	20	120
410521	13.0 mm	90 mm	150 mm	2018 3	20	120
410523	14.0 mm	90 mm	150 mm	2019 0	20	120
410525	15.0 mm	90 mm	150 mm	2020 6	20	120
410527	16.0 mm	90 mm	150 mm	2021 3	20	120

10 PC CONCRETE DRILL SET

- High carbon steel body with YG8 carbide tip
- For concrete, reinforced concrete, brick, block and masonry



Item No.	DIA.	Working Length	Overall Length	EAN 69743345+	Inner	Outer
410551BS	10PC 1/8in.	1-3/4 in.	3 in.	5013 2	36	72
410552BS	10PC 5/32in.	1-3/4 in.	3 in.	5014 9	36	72
410553BS	10PC 3/16in.	2-3/8 in.	4 in.	5015 6	36	72
410555BS	10PC 1/4in.	2-3/8 in.	4 in.	5016 3	30	60
410558BS	10PC 5/16in.	3-1/2 in.	6 in.	5017 0	24	48
410559BS	10PC 3/8in.	3-1/2 in.	6 in.	5018 7	18	36
410561BS	5PC 1/2in.	3-1/2 in.	6 in.	5019 4	18	36

5 PC MASONRY DRILL BITS

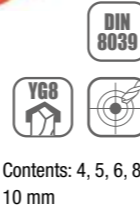
- 40CR body with YG8C carbide tip
- 3-flat shank for sure grip
- For concrete, reinforced concrete, brick, block and masonry
- Plastic box included



Item No.	Description	EAN 69426292+	Inner	Outer
410694	4, 5, 6, 8, 10 mm	8489 5	10	60
410695	5 PC - 5/32, 3/16, 1/4, 5/16, 3/8 in.	6206 0	10	60

DRILLING PRODUCTS

5 PC CONCRETE DRILL BITS

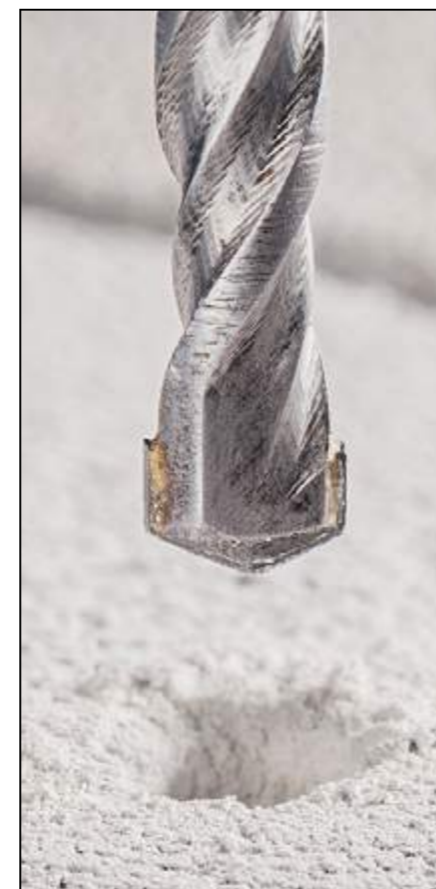


Item No.	Description	EAN 69426292+	Inner	Outer
410547	5 PC - 4, 5, 6, 8, 10 mm	2031 2	10	60

8 PC CONCRETE DRILL BITS



Item No.	Description	EAN 69426292+	Inner	Outer
410548	8 PC - 3, 4, 5, 6, 7, 8, 9, 10 mm	3820 1	10	60
410550	8 PC - 1/8, 5/32, 3/16, 1/4, 9/32, 5/16, 11/32, 3/8 in.	6970 0	10	60



DRILLING PRODUCTS

MULTI-PURPOSE DRILL BITS

- High carbon steel body with YG8 carbide tip
- For masonry, tile, wood, chipboard, metal plate and plastic



Item No.	DIA.	Working Length	Overall Length	EAN 69426292+	Inner	Outer
410601	2 PC 3.0 mm	36 mm	60 mm	2032 9	20	200
410603	4.0 mm	45 mm	75 mm	2033 6	20	200
410605	5.0 mm	51 mm	85 mm	2034 3	20	200
410607	6.0 mm	60 mm	100 mm	2035 0	20	120
410609	7.0 mm	60 mm	100 mm	2036 7	20	120
410611	8.0 mm	72 mm	120 mm	2037 4	20	120
410613	9.0 mm	72 mm	120 mm	2038 1	20	120
410615	10.0 mm	72 mm	120 mm	2039 8	20	120
410617	11.0 mm	90 mm	150 mm	2040 4	20	120
410619	12.0 mm	90 mm	150 mm	2041 1	20	120
410621	13.0 mm	90 mm	150 mm	2042 8	20	120

Item No.	DIA.	Working Length	Overall Length	EAN 69426292+	Inner	Outer
410623	14.0 mm	90 mm	150 mm	2043 5	20	120
410625	15.0 mm	90 mm	150 mm	2044 2	20	120
410627	16.0 mm	90 mm	150 mm	2045 9	20	120
410663	3/16 in.	2-3/8 in.	4 in.	5950 3	20	200
410665	1/4 in.	2-3/8 in.	4 in.	5952 7	20	120
410673	1/4 in.	3-1/2 in.	6 in.	5953 4	20	120
410674	5/16 in.	3-1/2 in.	6 in.	5954 1	20	120
410675	3/8 in.	3-1/2 in.	6 in.	5955 8	20	120
410677	1/2 in.	3-1/2 in.	6 in.	5957 2	20	120
410679	5/8 in.	3-1/2 in.	6 in.	5959 6	20	120
410680	3/4 in.	3-1/2 in.	6 in.	5960 2	20	120



5 PC MULTI-PURPOSE DRILL BITS



Item No.	Description	EAN 69426292+	Inner	Outer
410655	5 PC Multi-purpose Drill Bits	3821 8	10	60

8PC MULTI-PURPOSE DRILL BITS



Item No.	Description	EAN 69762270+	Inner	Outer
410657	8 PC Multi-Purpose Drill Bits	3322 7	10	60

GLASS/TILE DRILL BITS

- YG6X carbide tip
- For tile, china, mirrors and glass



Item No.	DIA.	EAN 69426292+	Inner	Outer
416201	4.0 mm	2337 5	10	100
416203	5.0 mm	2338 2	10	100
416205	6.0 mm	2339 9	10	100
416207	7.0 mm	2340 5	10	100
416209	8.0 mm	2341 2	10	100
416223	3/16 in.	6768 3	10	100
416225	1/4 in.	6769 0	10	100
416227	5/16 in.	6770 6	10	100
416229	3/8 in.	6771 3	10	100
416231	1/2 in.	6772 0	10	100

5PC GLASS/TILE DRILL BITS

- YG6X carbide tip
- For tile, china, mirrors and glass



Contents:
4, 5, 6, 8, 10 mm



Item No.	Description	EAN 69762270+	Inner	Outer
416241	5 PC Glass/Tile Drill Bits	3321 0	10	60





DRILLING & DRIVING BITS SET



- METALL
- CONCRETE
- WOOD
- COMBO



15 PC TI-COATED HSS TWIST DRILL SET



- Ti-coated, #4241 HSS, 118° split, fully ground body
- For steel, cast iron, malleable iron, non-ferrous metal and plastic



Item No.	Description	EAN 69426292+	Inner	Outer
418011	1.5, 1.5, 2.0, 2.0, 2.5, 2.5, 3.0, 3.2, 3.5, 4.0, 4.5, 5.0, 6.0, 8.0, 10.0 mm	0810 5	6	12
418013	1/16, 1/16, 5/64, 5/64, 3/32, 3/32, 7/64, 1/8, 9/64, 5/32, 3/16, 7/32, 1/4, 5/16, 3/8 in.	0811 2	6	12

20 PC DRILL & BIT SET



- 418101
- 7 PC hex shank HSS drill bits - 1.5, 2, 3, 4, 4.5, 5, 6 mm
 - 1 PC quick change holder
 - 9 PC 50 mm CR-V bits - \oplus #1, #2, #3 \ominus 4, 5.5, 6.5 mm
 - \oplus #1, #2, #3
 - 3 PC CR-V nut drivers - 6, 8, 10 mm

- 418103
- 7 PC hex shank HSS drill bits - 1/16, 3/32, 1/8, 5/32, 3/16, 7/32, 1/4 in.
 - 1 PC quick change holder
 - 9 PC 50 mm CR-V bits - \oplus #1, #2, #3 \ominus 3/16, 1/4, 9/32 in.
 - \oplus #1, #2, #3
 - 3 PC CR-V nut drivers - 1/4, 5/16, 3/8 in.

Item No.	Description	EAN 69426292+	Inner	Outer
418101	20 PC Drill & Bit Set - Metric	0820 4	6	12
418103	20 PC Drill & Bit Set - SAE	4625 1	6	12

15 PC CONCRETE DRILL SET



- High carbon steel body with YG8 carbide tip
- For concrete, reinforced concrete, brick, block and masonry



Item No.	Description	EAN 69426292+	Inner	Outer
418051	3.0, 3.0, 3.0, 4.0, 4.0, 4.0, 5.0, 5.0, 5.0, 6.0, 6.0, 8.0, 8.0, 10.0, 10.0 mm	0814 3	6	12

15 PC WOOD DRILL SET



- High carbon steel, brad point tip
- For soft wood, hard wood, plywood, hardboards and veneer wood



Item No.	Description	EAN 69426292+	Inner	Outer
418081	3.0, 3.0, 3.0, 4.0, 4.0, 4.0, 5.0, 5.0, 5.0, 6.0, 6.0, 8.0, 8.0, 10.0, 10.0 mm	0818 1	6	12
418083	1/8, 1/8, 1/8, 5/32, 5/32, 5/32, 3/16, 3/16, 3/16, 1/4, 1/4, 5/16, 5/16, 3/8, 3/8 in.	0819 8	6	12

17 PC COMBO DRILL SET



- 12 PC Ti-coated #4241 HSS drill bits



- 5 PC YG8 carbide tip masonry drill bits



Item No.	Description	EAN 69426292+	Inner	Outer
418021	12 PC - 1.5, 2.0, 2.5, 3.0, 3.2, 3.5, 4.0, 4.5, 4.8, 5.0, 5.5, 6.0 mm	0812 9	6	12
	5 PC - 3.0, 5.0, 6.0, 8.0, 10.0 mm			



28 PC QUICK CHANGE BIT SET



- 418113
- 24 PC 50 mm CR-V bits - \oplus #1 x 2, #2 x 4, #3 x 2
 - \ominus 5, 6 x 2, 7 mm
 - \oplus #1, #2 x 2, #3 \ominus 3, 4, 5 mm
 - \oplus T-10, T-15, T-20, T-25, T-30

- 1 PC quick change holder
- 3 PC CR-V nut drivers - 6, 8, 10 mm

- 418115
- 24 PC 50 mm CR-V bits - \oplus #1, #2 x 10, #3
 - \ominus 3/16, 1/4 x 2, 9/32 in.
 - \oplus #1, #2 x 6, #3

- 1 PC quick change holder
- 3 PC CR-V nut drivers - 1/4, 5/16, 3/8 in.

Item No.	Description	EAN 69426292+	Inner	Outer
418113	28 PC Quick Change Bit Set - Metric	0821 1	6	12
418115	28 PC Quick Change Bit Set - SAE	0822 8	6	12

29 PC DRIVING BIT SET



- 418107
- 24 PC 25 mm CR-V bits - \oplus #1x2, #2x4, #3x2
 - \oplus 4, 5.5 x 2, 6.5 mm
 - \oplus #1, #2 x 2, #3
 - \ominus 3, 4, 5 mm
 - \oplus T-10, T-15, T-20, T-25, T-30

- 2 PC 50 mm CR-V bits - \oplus #2 \oplus #2
- 1 PC 80 mm magnetic driver guide
- 2 PC CR-V nut drivers - 6, 8 mm

- 418109
- 24 PC 25 mm CR-V bits - \oplus #1, #2 x 10, #3
 - \ominus 3/16, 1/4 x 2, 9/32 in.
 - \oplus #1, #2 x 6, #3

- 2 PC 50 mm CR-V bits - \oplus #2 \oplus #2
- 1 PC magnetic driver guide
- 2 PC CR-V nut drivers - 1/4, 5/16 in.

Item No.	Description	EAN 69426292+	Inner	Outer
418107	29 PC Bit Set - Metric	5129 3	6	12
418109	29 PC Bit Set - SAE	5130 9	6	12

18 PC COMBO DRILL SET



- HSS twist drill bits for steel, cast iron, malleable iron, non-ferrous metal and plastic
- Concrete drill bits for concrete, reinforced concrete, brick, block and masonry
- Wood drill bits for soft wood, hard wood, plywood, hardboards and veneer wood

Item No.	Description	EAN 69708346+	Inner	Outer
418033	3, 4, 5, 6, 8, 10 mm	7854 3	6	24

21 PC MAGNETIC CASE BIT SET



- 15 PC 25 mm S2 bits: \oplus #1 x 2, #2 x 4, #3
- \oplus 4 x 2, 5.5 x 2, 6.5 mm
- \oplus #1, #2, #3
- 3 PC nut drivers: 6, 8, 10 mm
- 60 mm stainless steel extension bar
- Magnetic storage case



Item No.	Description	EAN 69426292+	Inner	Outer
418321	21 PC Magnetic Case Bit Set	5227 6	6	24

DRILLING PRODUCTS



25 PC HSS COBALT TWIST DRILL



- Industrial grade cobalt M35 high speed steel, 135 degree split, fully ground body
- For stainless steel, steel, cast steel and other hard materials



Contents:
1, 1.5, 2, 2.5, 3, 3.5, 4, 4.5, 5, 5.5, 6, 6.5, 7, 7.5, 8, 8.5, 9, 9.5, 10, 10.5, 11, 11.5, 12, 12.5, 13 mm

Item No.	Description	EAN 69762270+	Inner	Outer
410180	25 PC HSS Cobalt Twist Drill Bits Set	3314 2	5	10

25 PC HSS TWIST DRILL BITS SET



- Industry grade #6542 high speed steel material, 135 degree split, fully ground body
- For steel, cast iron, malleable iron, non-ferrous metal and plastic



Contents:
1, 1.5, 2, 2.5, 3, 3.5, 4, 4.5, 5, 5.5, 6, 6.5, 7, 7.5, 8, 8.5, 9, 9.5, 10, 10.5, 11, 11.5, 12, 12.5, 13 mm

Item No.	Description	EAN 69762270+	Inner	Outer
410183	25 PC HSS Twist Drill Bits Set	3315 9	5	10

7 PC MAGNETIC NUT DRIVER SET

6, 7, 8, 9, 10, 12, 13 mm



Item No.	Description	EAN 69426292+	Inner	Outer
418607	7 PC Magnetic Nut Driver Set	5788 2	18	54

31 PC QUICK CHANGE DRIVING BIT SET



Item No.	Description	EAN 69426292+	Inner	Outer
418130	31 PC Bit Set - Metric	3973 4	12	48

418130 - Metric
30 PC S2 bits (S2)
 - 3, 4.5, 5.5, 6.5 mm
 - #0, #1 x 2, #2 x 2, #3 x 2
 - #0, #1 x 2, #2 x 2, #3 x 2
 - 3, 4, 5, 6 mm
 - T-10, T-15, T-20, T-25, T-27, T-30, T-35, T-40
 1 PC stainless steel quick change chuck

31 PC QUICK CHANGE DRIVING BIT SET



Item No.	Description	EAN 69426292+	Inner	Outer
418132	31 PC Bit Set - SAE	3046 5	12	48

418132 - SAE
30 PC CR-V bits (CR-V)
 - 1/8, 5/32, 3/16, 1/4 in.
 - #0, #1 x 2, #2 x 2, #3 x 2
 - #0, #1 x 2, #2 x 2, #3 x 2
 - 1/8, 5/32, 3/16, 1/4 in.
 - T-10, T-15, T-20, T-25, T-27, T-30, T-35, T-40
 1 PC stainless steel quick change chuck

DRILLING PRODUCTS

61 PC QUICK CHANGE DRIVING BIT SET



Item No.	Description	EAN 69426292+	Inner	Outer
418159	61 PC Bit Set - Metric	3974 1	6	24

418159 - Metric
59 PC S2 bits (S2)
 - 3 x 2, 4.5 x 2, 5.5 x 2, 6.5 x 2 mm
 - #0 x 2, #1 x 2, #2 x 5, #3 x 2
 - #0 x 2, #1 x 2, #2 x 5, #3 x 2
 - 2, 3, 4, 5, 6, 8 mm
 - 1/16, 3/32, 1/8, 5/32, 3/16, 7/32 in.
 - T-8, T-9, T-10, T-15, T-20, T-25, T-27, T-30, T-35, T-40
 - T-10, T-15, T-20, T-25, T-27, T-30, T-40
 1 PC bit adaptor
 1 PC stainless steel quick change chuck

61 PC QUICK CHANGE DRIVING BIT SET



Item No.	Description	EAN 69426292+	Inner	Outer
418162	61 PC Bit Set - SAE	4840 8	6	24

418162 - SAE
59 PC CR-V bits (CR-V)
 - 1/8 x 2, 5/32 x 2, 3/16 x 2, 1/4 x 2 in.
 - #0 x 2, #1 x 2, #2 x 5, #3 x 2
 - #0 x 2, #1 x 2, #2 x 5, #3 x 2
 - 2, 3, 4, 5, 6, 8 mm
 - 1/16, 3/32, 1/8, 5/32, 3/16, 7/32 in.
 - T-8, T-9, T-10, T-15, T-20, T-25, T-27, T-30, T-35, T-40
 - T-10, T-15, T-20, T-25, T-27, T-30, T-40
 1 PC bit adaptor
 1 PC stainless steel quick change chuck

117 PC QUICK CHANGE DRIVING BIT SET



Item No.	Description	EAN 69426292+	Inner	Outer
418210	117 PC CR-V bits	3975 8	6	12

418210 - Metric
115 PC CR-V bits (CR-V)
 - 3, 4, 4.5, 5, 5.5, 6, 6.5, 7, 8 mm;
 - 1/8, 5/32, 3/16, 7/32, 1/4 in.
 - #0 x 2, #1 x 2, #2 x 5, #3 x 2
 - #0 x 2, #1 x 2, #2 x 5, #3 x 2
 - 1.5, 2, 2.5, 3, 4, 5, 5.5, 6, 8 mm
 - 1/16, 5/64, 3/32, 7/64, 1/8, 9/64, 5/32, 3/16, 7/32, 1/4 in.
 - 2, 2.5, 3, 4, 5, 6 mm
 - 5/64, 3/32, 7/64, 1/8, 9/64, 5/32 in.
 - T-8 x 2, T-10 x 2, T-15 x 2, T-20 x 2, T-25 x 2, T-27 x 2, T-30 x 2, T-35 x 2, T-40 x 2
 - T-10, T-15, T-20, T-25, T-27, T-30, T-35, T-40
 - #0, #1, #2, #3
 - 4, 6, 8, 10
 - #1, #2, #3, #4
 - M5, M6, M8
 - 6, 8, 10
 - C1, C2, C3
 1 PC bit adaptor
 1 PC stainless steel quick change chuck

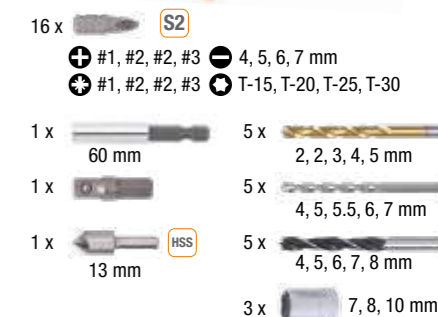
55 PC DRILL & BIT SET



Item No.	Description	EAN 69426292+	Inner	Outer
418455	55 PC Drill & Bit Set	3975 8	0	10

418455
11 PC Ti-coated HSS drills:
 - 1.5, 2, 2.5, 3, 3.5, 4, 4.5, 5, 5.5, 6, 6.5 mm
 5 PC concrete drills: 4, 5, 6, 8, 10 mm
 5 PC wood drills: 4, 5, 6, 8, 10 mm
 3 PC wood spades: 13, 16, 19 mm
 19 PC 25 mm CR-V bits:
 - 4, 5, 6 mm
 - #1, #2, #3
 - #1, #2, #3
 - #1, #2, #3
 - 3, 4, 5, 6 mm
 - T-10, T-15, T-20, T-25, T-27, T-30
 1 PC bit / socket adaptor
 6 PC 50 mm CR-V bits:
 - #1, #2, #3
 - 4, 5, 6 mm
 3 PC nut drivers: 6, 8, 10 mm
 1 PC 60 mm extension bar
 1 PC 12.7 mm countersink

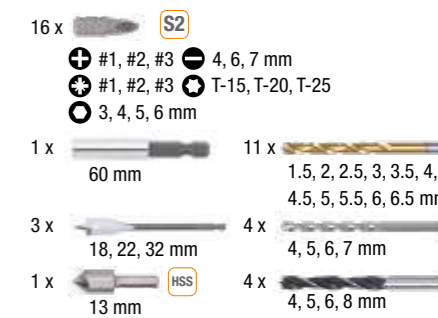
37 PC DRILL BIT SET



Item No.	Description	EAN 69426292+	Inner	Outer
418713	37 PC Drill Bit Set	6031 8	6	24

16 x S2
 - #1, #2, #3
 - #1, #2, #3
 - T-15, T-20, T-25, T-30
 1 x 60 mm
 5 x 2, 2, 3, 4, 5 mm
 1 x 13 mm
 5 x 4, 5, 5.5, 6, 7 mm
 5 x 4, 5, 6, 7, 8 mm
 3 x 7, 8, 10 mm

40 PC DRILL BIT SET



Item No.	Description	EAN 69426292+	Inner	Outer
418714	40 PC Drill Bit Set	6032 5	6	24

16 x S2
 - #1, #2, #3
 - #1, #2, #3
 - T-15, T-20, T-25
 1 x 60 mm
 11 x 1.5, 2, 2.5, 3, 3.5, 4, 4.5, 5, 5.5, 6, 6.5 mm
 3 x 18, 22, 32 mm
 4 x 4, 5, 6, 7 mm
 1 x 13 mm
 4 x 4, 5, 6, 8 mm

78 PC DRILL BIT SET



- 40 x S2
 - #0 x 2, #1 x 2, #2 x 3, #3 x 3
 - 4 x 2, 6 x 2, 7 x 2 mm
 - #0 x 2, #1 x 2, #2 x 3, #3 x 3
 - T-10, T-10, T-15, T-15, T-20, T-20, T-25, T-25, T-30, T-40
 - 3, 4, 5, 6 mm
- 1 x 60 mm
- 1 x 13 mm
- 4 x 5, 6, 8 mm
- 1 x
- 5 x 32, 38, 44, 54 mm
- 11 x 3, 3.5, 4, 4.5, 5, 5.5, 6, 6.5, 7, 7.5, 8 mm
- 6 x 4, 5, 5.5, 6, 7, 8 mm
- 5 x 4, 5, 6, 8, 10 mm
- 4 x 12, 16, 20, 22 mm
- 5 x 32, 38, 44, 54 mm

Item No.	Description	EAN	Inner	Outer
418737	78 PC Drill Bit Set	69426292+	6034 9	0 8

90 PC DRILL BIT SET



- 40 x S2
 - #0 x 2, #1 x 2, #2 x 3, #3 x 3
 - 4 x 2, 6 x 2, 7 x 2 mm
 - #0 x 2, #1 x 2, #2 x 3, #3 x 3
 - T-10, T-10, T-15, T-15, T-20, T-20, T-25, T-25, T-30, T-40
 - 3, 4, 5, 6 mm
- 1 x 60 mm
- 1 x 13 mm
- 4 x 5, 6, 8 mm
- 1 x
- 5 x 32, 38, 44, 54 mm
- 7 x 4, 5, 6, 7, 8, 9, 10 mm
- 15 x 1.5, 2, 2.5, 3, 3.2, 3.5, 4, 4.5, 5.5, 6, 6.5, 7, 8, 10 mm
- 6 x 4, 5, 5.5, 6, 7, 8 mm
- 5 x 4, 5, 6, 8, 10 mm
- 4 x 12, 16, 20, 22 mm

Item No.	Description	EAN	Inner	Outer
418739	90 PC Drill Bit Set	69426292+	6035 6	0 8

99 PC DRILL BIT SET



- 42 x S2 25 mm
 - #1 x 3, #2 x 5, #3 x 2
 - 4, 5 x 3, 6 x 3, 7 mm
 - #1 x 3, #2 x 5, #3 x 2
 - T-10, T-10, T-15, T-15, T-20, T-20, T-25, T-25, T-27, T-27, T-30, T-30
 - 3, 4 mm
- 13 x 1.5, 2, 2.5, 3, 3, 3.5, 4, 4.5, 5.5, 5.5, 6, 7 mm
- 5 x 3, 5, 6, 8, 10 mm
- 13 x 3, 3, 3.5, 4, 4.5, 5, 5.5, 6, 6.5, 7, 7.5, 8 mm
- 1 x 60 mm
- 12 x S2 50 mm
 - #1, #2, #3
 - 4, 5, 6, 6, 7 mm
 - T-10, T-15, T-20
- 7 x 5, 6, 8, 10, 11, 12, 13 mm
- 1 x 32, 38, 44, 54 mm
- 1 x 13 mm

Item No.	Description	EAN	Inner	Outer
418740	99 PC Drill Bit Set	69426292+	6036 3	0 8

13 PC QUICK CHANGE DRILL BIT SET

- 419013 - Metric
 - 6 PC 50 mm bits #1, #2, #3
 - 3 PC wood spades - 12, 19, 25 mm
 - 3 PC HSS drills - 1.5, 3.0, 5.0 mm
 - 1 PC quick change chuck
- 419014 - SAE
 - 6 PC 2 in. bits #1, #2, #3
 - 3 PC wood spades - 1/2, 3/4, 1 in.
 - 3 PC HSS drills - 1/16, 1/8, 3/16 in.
 - 1 PC quick change chuck



Item No.	Description	EAN	Inner	Outer
419013	13 PC Drill Bit Set - Metric	4627 5	6	36
419014	13 PC Drill Bit Set - SAE	4865 1	6	36



90 PC DRILL & BIT SET

- 1 x 12 mm
- 5 x 3, 5, 6, 8 mm
- 1 x
- 5 x 32, 38, 45, 54 mm
- 1 x 60 mm
- 2 x 16, 22 mm
- 5 x 3, 4, 5, 6, 8 mm
- 5 x 3, 4, 5, 6, 8 mm
- 13 x 1.5, 1.5, 2, 2, 2.5, 2.5, 3, 3.5, 4, 4.5, 5, 6, 6.5 mm
- 46 x CR-V
 - #1 x 2, #2 x 4, #3 x 3
 - (3, 4, 5, 6, 7 mm) x 2
 - #1 x 2, #2 x 3, #3 x 2
 - T-10, T-15, T-20, T-25, T-27, T-30
 - #1 x 3, #2 x 4, #3 x 2
 - 2, 3, 4, 5, 6 mm
- 6 x 6, 7, 8, 9, 10, 12 mm



120 PC DRILLS & BITS SET

- 88 x 25 mm
 - #0 x 3, #1 x 3, #2 x 6, #3 x 4
 - 3 mm x 3, 4 mm x 3, 5 mm x 4, 6 mm x 4, 7 mm x 1
 - #0 x 3, #1 x 8, #2 x 6, #3 x 6
 - T-10, T-10, T-15, T-15, T-20, T-20, T-25, T-25, T-27, T-30
 - #0 x 2, #1 x 2, #2 x 6, #3 x 2
 - 2, 2.5, 3, 4, 5, 6 mm
 - 5/64, 3/32, 1/8, 5/32, 3/16, 1/4 in.
- 15 x 50 mm
 - #1, #2, #3
 - 3, 4, 5, 6, 7 mm
 - #0, #1, #2, #3
 - #1, #2, #3
- 5 x 6, 8, 10, 11, 13 mm
- 1 x 60 mm
- 11 x 1.5, 2, 2.5, 3, 3.2, 3.5, 4, 5, 6, 6.5, 8 mm



Item No.	Description	EAN	Inner	Outer
418744	90 Pc Drills & Bits Set	69743345+	5549 6	0 16

Item No.	Description	EAN	Inner	Outer
418746	120 PC Drills & Bits Set	69762270+	3108 7	0 16

400 PC DRILL BITS SET



- 14 x HSS
 - 1.5, 1.5, 2, 2.5, 3, 3.2, 3.5, 4, 4.5, 4.8, 5, 5.5, 6, 6.5 mm
- 5 x HM TCT
 - 4, 5, 6, 8, 10 mm
- 5 x HCS
 - 4, 5, 6, 8, 10 mm
- 2 x HCS
 - 13, 16, mm
- 6 x CR-V
 - 6, 7, 8, 9, 10, 11 mm
- 1 x HCS
- 1 x HCS
- 1 x
- 52 x 25 mm
 - 3, 3, 4, 4, 5, 5, 6, 6 mm
 - #0, #1 x 3, #2 x 5, #3 x 2
 - #0, #1 x 3, #2 x 4, #3 x 2
 - T10, T15, T20, T25, T27, T30, T35, T40
 - S0, S1, S2 x 2, S3
 - 2, 3, 4, 5, 6 mm, 5/64, 1/8, 5/32, 3/16, 1/4 in.
- 11 x 50 mm
 - 4, 5, 6 mm
 - #1, #2, #3
 - T15, T20
- 4 x 3, 5, 8 mm
- 90 x 3 x 30 mm x 45 pc
- 205 x 5 mm x 85 pc
- 4 x 40 mm x 20 pc
- 5 x 50 mm x 15 pc
- 5 x 60 mm x 10 pc
- 6 mm x 65 pc
- 8 mm x 35 pc
- 10 mm x 20 pc

Item No.	Description	EAN	Inner	Outer
418505	400 PC Drill Bits Set	69762270+	3320 3	0 5



42 PC IMPACT BIT SET PRO GRADE

- 32 x
 - 25 mm (1 in.)
 - ⊕ #1 x 2, #2 x 8
 - ⊕ #1, #2 x 2, #3
 - ⊕ T-15, T-20 x 2, T-25 x 2, T-30 x 2, T-40
 - ⊖ 5.5, 6.5 mm
 - 3 x 2, 4 x 2, 5 mm
 - #2
 - 2 x
 - 6, 8 mm
 - 7 x
 - 50 mm (2 in.)
 - ⊕ #2 x 2
 - ⊕ T-20, T-25
 - ⊕ #2 x 2
 - 5 mm
 - 1 x
 - 60 mm



Item No.	Description	EAN 69743345+	Inner	Outer
455842	42 PC	5092 7	5	20

36 PC IMPACT BIT SET PRO GRADE

- 24 x
 - 25 mm (1 in.)
 - ⊕ #1 x 2, #2 x 8, #3 x 2
 - ⊕ #1, #2, #3
 - ⊕ T-15, T-20, T-25, T-30
 - ⊖ 5.5, 6.5 mm
 - 3, 4, 5 mm
 - 3 x
 - 6, 8, 10 mm
 - 5 x
 - 1 x
 - 60 mm
 - 1 x
 - 3/8 in.
 - 50 mm (2 in.)
 - ⊕ #2 x 2
 - ⊕ T-20, T-25
 - 2 x
 - 10, 12 mm



Item No.	Description	EAN 69743345+	Inner	Outer
455844	36 PC	5093 4	5	20

37 PC IMPACT BIT SET PRO GRADE

- 24 x
 - 25 mm (1 in.)
 - ⊕ #1 x 2, #2 x 6, #3 x 2
 - ⊕ #1, #2, #3
 - ⊕ T-15, T-20 x 2, T-25 x 2, T-30
 - ⊖ 5.5, 6.5 mm
 - 3, 4, 5 mm
 - 2 x
 - 8, 10 mm
 - 1 x
 - 60 mm
 - 50 mm (2 in.)
 - ⊕ #2
 - ⊕ #2
 - 8 x
 - 1.5, 2, 2.5, 3, 3.5, 4, 5, 6 mm



Item No.	Description	EAN 69743345+	Inner	Outer
455848	37 PC	5095 8	5	20

47 PC IMPACT BIT SET PRO GRADE

- 32 x
 - 25 mm (1 in.)
 - ⊕ #1 x 2, #2 x 4, #3 x 2
 - ⊕ #1 x 2, #2 x 4, #3 x 2
 - ⊕ T-15, T-20 x 2, T-25 x 2, T-30 x 2, T-40
 - ⊖ 5.5, 6.5 mm
 - 3 x 2, 4 x 2, 5 x 2 mm
 - 4 x
 - 6, 8, 10, 12 mm
 - 1 x
 - 60 mm
 - 10 x
 - 50 mm (2 in.)
 - ⊕ #2 x 10



Item No.	Description	EAN 69743345+	Inner	Outer
455846	47 PC	5094 1	5	20

20 PC IMPACT BIT SET PRO GRADE

- 20 x
 - 25 mm (1 in.)
 - ⊕ #2 x 25 mm (1 in.)



Item No.	Description	EAN 69743345+	Inner	Outer
455820	20 PC	5090 3	24	48

10 PC IMPACT BIT SET PRO GRADE

- 10 x
 - 50 mm (2 in.)
 - ⊕ #2 x 50 mm (2 in.)



Item No.	Description	EAN 69743345+	Inner	Outer
455810	10 PC	5088 0	24	48



FLUSH TRIM ROUTER BITS

- For fast smooth trimming and through cutting of laminates, plywood, paneling and other materials

Item No.	Cutting Size	Shank Dia.	Product Details	EAN 69426292+	Inner	Outer
420031	12.7 mm	8 mm	Flush Trim	2681 9	10	30
420331	1/2 in.	1/4 in.	Flush Trim	6258 9	10	30

KEY HOLE ROUTER BITS

- For making key hole slots for picture frames, shelves, mirrors, cabinets and other wall hangings

Item No.	Cutting Size	Shank Dia.	Product Details	EAN 69426292+	Inner	Outer
420001	9.52 mm	8 mm	Key Hole	2676 5	10	30

2-FLUTE STRAIGHT ROUTER BITS

- For roughing operations where high production feed rates are essential
- Optimum chip clearance
- Specially designed tip for fast plunge cutting

Item No.	Cutting Size	Shank Dia.	Product Details	EAN 69426292+	Inner	Outer
420011	6 mm	8 mm	2 Flute Straight	2677 2	10	30
420012	8 mm	8 mm	2 Flute Straight	3834 8	10	30
420013	10 mm	8 mm	2 Flute Straight	2678 9	10	30
420017	16 mm	8 mm	2 Flute Straight	2680 2	10	30
420311	1/4 in.	1/4 in.	2 Flute Straight	6253 4	10	30
420313	3/8 in.	1/4 in.	2 Flute Straight	6254 1	10	30
420315	1/2 in.	1/4 in.	2 Flute Straight	6255 8	10	30
420317	3/4 in.	1/4 in.	2 Flute Straight	6256 5	10	30



DOVETAIL ROUTER BITS

- For dovetail joint applications
- Cutting edges are precision ground for extra smooth cuts

Item No.	Cutting Size	Shank Dia.	Product Details	EAN 69426292+	Inner	Outer
420041	12.7 mm	8 mm	Dovetail	2682 6	10	30

V-GROOVE ROUTER BITS

- For door front grooving, lettering and sign work
- Shear angle cutter geometry for efficient cutting

Item No.	Cutting Size	Shank Dia.	Product Details	EAN 69426292+	Inner	Outer
420051	12.7 mm	8 mm	V-Groove	2683 3	10	30
420350	3/8 in.	1/4 in.	V-Groove	6261 9	10	30

CLASSICAL OGEE ROUTER BITS

- Adds classic beauty to your product with beautiful, decorative edging

Item No.	Cutting Size	Shank Dia.	Product Details	EAN 69426292+	Inner	Outer
420081	31.8 mm	8 mm	Classical Ogee	2686 4	10	30

COVE BOX ROUTER BITS

- For decorative edging

Item No.	Cutting Size	Shank Dia.	Product Details	EAN 69426292+	Inner	Outer
420111	28.5 mm	8 mm	Core Box	2693 2	10	30
420411	7/8 in.	1/4 in.	Core Box	6271 8	10	30

CLASSICAL COVE ROUTER BITS

- For decorative edging

Item No.	Cutting Size	Shank Dia.	Product Details	EAN 69426292+	Inner	Outer
420115	28.5 mm	8 mm	Classical Cove	3833 1	10	30
420381	1-1/8 in.	1/4 in.	Classical Cove	6266 4	10	30

TONGUE & GROOVE ROUTER BITS

- Produces perfectly fitted tongue and groove joints
- Ideal for cabinet doors

Item No.	Cutting Size	Shank Dia.	Product Details	EAN 69426292+	Inner	Outer
420155	25 mm	5 mm	Tongue & Groove	2694 9	10	30

T-SLOT ROUTER BITS

- Cutting slots for joining biscuits

Item No.	Cutting Size	Shank Dia.	Product Details	EAN 69426292+	Inner	Outer
420145	4 mm	8 mm	T-slot	3837 9	10	30
420151	5 mm	8 mm	T-slot	3838 6	10	30

CORE BOX ROUTER BITS

- For rounded grooves used in a variety of applications ranging from doors to columns

Item No.	Cutting Size	Shank Dia.	Product Details	EAN 69426292+	Inner	Outer
420071	12 mm	8 mm	Core Box	2685 7	10	30
420371	1/4 in.	1/4 in.	Core Box	6263 3	10	30
420372	3/8 in.	1/4 in.	Core Box	6264 0	10	30
420373	1/2 in.	1/4 in.	Core Box	6265 7	10	30

ROUND-OVER ROUTER BITS

- Create decorative edging and drop-leaf table joints

Item No.	Cutting Size	Shank Dia.	Product Details	EAN 69426292+	Inner	Outer
420093	25.4 mm	8 mm	Corner Rounding	2688 8	10	30
420391	7/8 in.	1/4 in.	Corner Rounding	6267 1	10	30
420393	1 in.	1/4 in.	Corner Rounding	6268 8	10	30

BEADING ROUTER BITS

- Create decorative edging and drop-leaf table joints

Item No.	Cutting Size	Shank Dia.	Product Details	EAN 69426292+	Inner	Outer
420103	25.4 mm	8 mm	Beading	2691 8	10	30
420401	7/8 in.	1/4 in.	Beading	6269 5	10	30
420403	1 in.	1/4 in.	Beading	6270 1	10	30

45° CHAMFER ROUTER BITS

- For decorative bevel edging and concealed joints

Item No.	Cutting Size	Shank Dia.	Product Details	EAN 69426292+	Inner	Outer
420121	35 mm	8 mm	45° Chamfer	2694 9	10	30
420421	1 in.	1/4 in.	45° Chamfer	6273 2	10	30

ROMAN OGEE ROUTER BITS

- For decorative edging and period furniture

Item No.	Cutting Size	Shank Dia.	Product Details	EAN 69426292+	Inner	Outer
420135	29 mm	8 mm	Roman Ogee	3835 3	10	30

CLASSICAL ROUTER BITS

- For decorative edging

Item No.	Cutting Size	Shank Dia.	Product Details	EAN 69426292+	Inner	Outer
420141	35 mm	8 mm	Classical	3836 2	10	30

RABBETING ROUTER BITS

- Equipped with pilot for making rabbit cuts without use of a router guide

Item No.	Cutting Size	Shank Dia.	Product Details	EAN 69426292+	Inner	Outer
420161	9.5 mm	8 mm	Rabbeting	3840 9	10	30
420461	7/8 in.	1/4 in.	Rabbeting	6274 9	10	30

12 PC ROUTER BITS SET



- 1/4 in. Round shank
- 6 mm (1/4 in.) straight bit
- 12 mm (1/2 in.) straight bit
- 16 mm (5/8 in.) straight bit
- 12.7 mm (1/2 in.) 90deg V grooving bit
- 12.7 mm (1/2 in.) dovetail bit
- 32 mm (1-1/4 in.) 45deg chamfer bit
- 12.7 mm (1/2 in.) flush trim bit
- R6.3 mm (1/4 in.) round over bit
- R9.5 mm (3/8 in.) round over bit
- R6.3 mm (1/4 in.) core box bit
- R6.3 mm (1/4 in.) cove bit
- R4 mm (5/32 in.) roman ogee bit

Item No.	Description	EAN 69426292+	Inner	Outer
420212	12 PC	3055 7	0	40



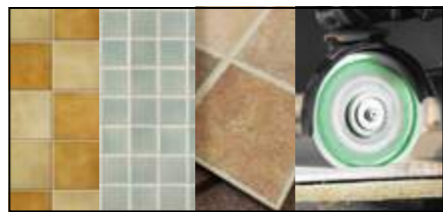
DIAMOND BLADES



APPLICATION GUIDE											
	Wet	Dry	Turbo		Wet	Dry	Turbo		Wet	Dry	Turbo
Ceramic Tiles	✓	✓	✓	Marble	✓	✓	✓	Granite	✓	✓	✓
Paver	✓			Concrete		✓	✓	Terracotta	✓	✓	✓
Slate	✓	✓	✓	Cement	✓	✓	✓	Blue Stone			✓
PVC			✓	Clay Bricks		✓	✓	Aluminium			✓

X-RIM TURBO DIAMOND BLADE

PRO GRADE



EN 13236 MPA DRY WET ø 22.23 mm 7/8 in.

- Hot press sintered, extremely smooth cutting finish on porcelain, marble, and ceramic tile
- Reduce chipping of tiles

Item No.	Outer Diameter	Bore Size	MPA	RPM	Tip Thickness	Diamond Height	EAN 69762270+	Inner	Outer
425171	105 mm (4-1/8 in.)	22.23-20-16 mm (7/8-3/4-5/8 in.)	-	14500	1.3 mm	10 mm	3334 0	12	36
425173	115 mm (4-1/2 in.)	22.23-20-16 mm (7/8-3/4-5/8 in.)	✓	13200	1.3 mm	10 mm	3335 7	12	36
425175	125 mm (5 in.)	22.23-20-16 mm (7/8-3/4-5/8 in.)	✓	12200	1.4 mm	10 mm	3336 4	12	36
425177	180 mm (7 in.)	22.23-20-16 mm (7/8-3/4-5/8 in.)	✓	8500	1.8 mm	10 mm	3337 1	12	24
425179	200 mm (7-7/8 in.)	22.23-20-16 mm (7/8-3/4-5/8 in.)	✓	7600	1.8 mm	10 mm	3338 8	12	24
425181	230 mm (9 in.)	22.23-20-16 mm (7/8-3/4-5/8 in.)	✓	6600	2.0 mm	10 mm	3339 5	12	24

DIAMOND BLADES-DRY

PRO GRADE



EN 13236 MPA DRY ø 22.23 mm 7/8 in.

- Hot pressed sintered for heavy duty and fast cutting
- For dry use
- Universal use on concrete, bricks, granite, sandstone, block and building materials

Item No.	Outer Diameter	Bore Size	MPA	RPM	Tip Thickness	Diamond Height	EAN 69426292+	Inner	Outer
425021	105 mm (4-1/8 in.)	22.23-20-16 mm (7/8-3/4-5/8 in.)	-	14500	1.9 mm	10 mm	2349 8	12	36
425023	115 mm (4-1/2 in.)	22.23-20-16 mm (7/8-3/4-5/8 in.)	✓	13200	2 mm	10 mm	2350 4	12	36
425025	125 mm (5 in.)	22.23-20-16 mm (7/8-3/4-5/8 in.)	✓	12200	2 mm	10 mm	2351 1	12	36
425029	180 mm (7 in.)	22.23-20-16 mm (7/8-3/4-5/8 in.)	✓	8500	2.2 mm	10 mm	2352 8	12	24
425033	230 mm (9 in.)	22.23-20-16 mm (7/8-3/4-5/8 in.)	✓	6600	2.4 mm	10 mm	2353 5	12	24

DIAMOND BLADES-WET

PRO GRADE



EN 13236 MPA WET ø 22.23 mm 7/8 in.

- Hot press sintered, fast cutting, wet use
- For tile and ceramics

Item No.	Outer Diameter	Bore Size	MPA	RPM	Tip Thickness	Diamond Height	EAN 69426292+	Inner	Outer
425151	105 mm (4-1/8 in.)	22.23-20-16 mm (7/8-3/4-5/8 in.)	-	14500	1.6 mm	7.5 mm	2376 4	12	36
425155	115 mm (4-1/2 in.)	22.23-20-16 mm (7/8-3/4-5/8 in.)	✓	13200	1.6 mm	7.5 mm	2378 8	12	36
425157	125 mm (5 in.)	22.23-20-16 mm (7/8-3/4-5/8 in.)	✓	12200	1.6 mm	7.5 mm	2379 5	12	36
425161	180 mm (7 in.)	22.23-20-16 mm (7/8-3/4-5/8 in.)	✓	8500	2 mm	7.5 mm	2381 8	12	24
425165	230 mm (9 in.)	22.23-20-16 mm (7/8-3/4-5/8 in.)	✓	6600	2 mm	7.5 mm	2383 2	12	24

DIAMOND BLADES-TURBO

PRO GRADE



EN 13236 MPA DRY WET ø 22.23 mm 7/8 in.

- Hot press sintered, fast cutting, dry and wet use
- Universal use on concrete, granite, brick, block and building materials

Item No.	Outer Diameter	Bore Size	MPA	RPM	Tip Thickness	Diamond Height	EAN 69426292+	Inner	Outer
425051	105 mm (4-1/8 in.)	22.23-20-16 mm (7/8-3/4-5/8 in.)	-	14500	2 mm	10 mm	2356 6	12	36
425053	115 mm (4-1/2 in.)	22.23-20-16 mm (7/8-3/4-5/8 in.)	✓	13200	2.1 mm	10 mm	2357 3	12	36
425055	125 mm (5 in.)	22.23-20-16 mm (7/8-3/4-5/8 in.)	✓	12200	2.1 mm	10 mm	2358 0	12	36
425059	180 mm (7 in.)	22.23-20-16 mm (7/8-3/4-5/8 in.)	✓	8500	2.6 mm	10 mm	2360 3	12	24
425063	230 mm (9 in.)	22.23-20-16 mm (7/8-3/4-5/8 in.)	✓	6600	2.8 mm	10 mm	2362 7	12	24

DIAMOND BLADES-TURBO

PRO GRADE



EN 13236 MPA DRY WET ø 22.23 mm 7/8 in.

- Hot press sintered, fast cutting, dry and wet use
- For granite, marble, very hard bricks, stone, mortar, and other hard building materials

Item No.	Outer Diameter	Bore Size	MPA	RPM	Tip Thickness	Diamond Height	EAN 69426292 (A) 69743345 (B)	Inner	Outer
425100	105 mm (4-1/8 in.)	22.23-20-16 mm (7/8-3/4-5/8 in.)	-	14500	2 mm	10 mm	B + 5006 4	12	36
425103	115 mm (4-1/2 in.)	22.23-20-16 mm (7/8-3/4-5/8 in.)	✓	13200	2.1 mm	10 mm	A + 2367 2	12	36
425105	125 mm (5 in.)	22.23-20-16 mm (7/8-3/4-5/8 in.)	✓	12200	2.1 mm	10 mm	A + 2368 9	12	36
425109	180 mm (7 in.)	22.23-20-16 mm (7/8-3/4-5/8 in.)	✓	8500	2.6 mm	10 mm	A + 2370 2	12	24
425113	230 mm (9 in.)	22.23-20-16 mm (7/8-3/4-5/8 in.)	✓	6600	2.8 mm	10 mm	A + 2372 6	12	24

DIAMOND BLADES-DRY



EN 13236 DRY ϕ 22.23 mm / 7/8 in.

- Dry use
- For concrete, granite, brick, block and other building materials



Item No.	Outer Diameter	Bore Size	RPM	Tip Thickness	Diamond Height	EAN	Inner	Outer
425521	105 mm (4-1/8 in.)	22.23-20-16 mm (7/8-3/4-5/8 in.)	14500	1.9 mm	7 mm	8910 4	12	36
425523	115 mm (4-1/2 in.)	22.23-20-16 mm (7/8-3/4-5/8 in.)	13200	1.9 mm	7 mm	3993 2	12	36
425525	125 mm (5 in.)	22.23-20-16 mm (7/8-3/4-5/8 in.)	12200	1.9 mm	7 mm	8911 1	12	36
425527	180 mm (7 in.)	22.23-20-16 mm (7/8-3/4-5/8 in.)	8500	2.4 mm	7 mm	3994 9	12	24
425531	230 mm (9 in.)	22.23-20-16 mm (7/8-3/4-5/8 in.)	6600	2.6 mm	7 mm	3995 6	12	24

DIAMOND BLADES-WET



EN 13236 WET ϕ 22.23 mm / 7/8 in.

- Wet use
- For ceramic and granite tile



Item No.	Outer Diameter	Bore Size	RPM	Tip Thickness	Diamond Height	EAN	Inner	Outer
425501	105 mm (4-1/8 in.)	22.23-20-16 mm (7/8-3/4-5/8 in.)	14500	1.9 mm	5 mm	3992 5	12	36
425503	115 mm (4-1/2 in.)	22.23-20-16 mm (7/8-3/4-5/8 in.)	13200	1.9 mm	5 mm	4734 0	12	36
425505	125 mm (5 in.)	22.23-20-16 mm (7/8-3/4-5/8 in.)	12200	1.9 mm	5 mm	4735 7	12	36
425507	180 mm (7 in.)	22.23-20-16 mm (7/8-3/4-5/8 in.)	8500	2.4 mm	5 mm	8908 1	12	24
425509	230 mm (9 in.)	22.23-20-16 mm (7/8-3/4-5/8 in.)	6600	2.6 mm	5 mm	8909 8	12	24

DIAMOND BLADES-TURBO



EN 13236 DRY WET ϕ 22.23 mm / 7/8 in.

- Wet and dry use
- For granite, hard brick and hard stone



Item No.	Outer Diameter	Bore Size	RPM	Tip Thickness	Diamond Height	EAN	Inner	Outer
425541	105 mm (4-1/8 in.)	22.23-20-16 mm (7/8-3/4-5/8 in.)	14500	2.1 mm	7 mm	8912 8	12	36
425543	115 mm (4-1/2 in.)	22.23-20-16 mm (7/8-3/4-5/8 in.)	13200	2.1 mm	7 mm	3996 3	12	36
425545	125 mm (5 in.)	22.23-20-16 mm (7/8-3/4-5/8 in.)	12200	2.1 mm	7 mm	8913 5	12	36
425547	180 mm (7 in.)	22.23-20-16 mm (7/8-3/4-5/8 in.)	8500	2.6 mm	7 mm	8914 2	12	24
425549	230 mm (9 in.)	22.23-20-16 mm (7/8-3/4-5/8 in.)	6600	2.8 mm	7 mm	8915 9	12	24

3PC DIAMOND BLADES



DRY WET TURBO

EN 13236 ϕ 22.23 mm / 7/8 in.

- 1 pc turbo, 1 pc dry, 1 pc wet
- For general concrete material cutting



Item No.	Outer Diameter	Bore Size	RPM	EAN	Inner	Outer
425573	115 mm (4-1/2 in.)	22.23-20-16 mm (7/8-3/4-5/8 in.)	13200	7009 6	12	48



MULTI-PURPOSE DIAMOND BLADE

PRO GRADE

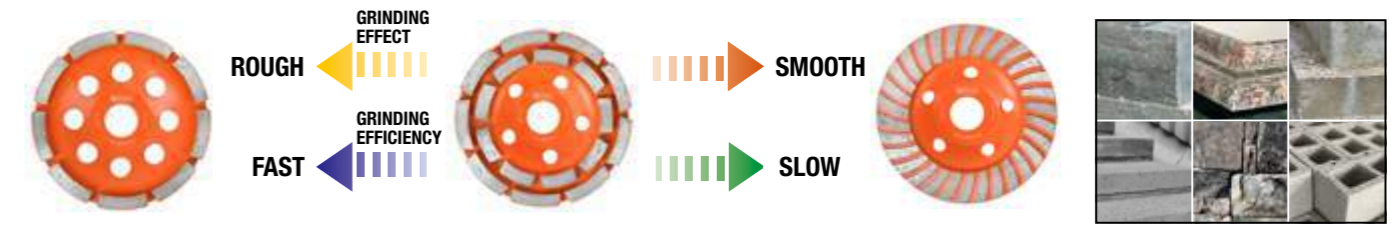


MULTI-FUNCTION

- All purpose diamond edged cut off wheel
- Advanced diamond technology provides extreme cutting in wood, tubular metals, non-ferrous metals, masonry products, tiles and PVC
- High grade diamond rim to reduce dust residue and odors versus bonded abrasives
- Heat-resistant vacuum Brazed to deliver best-in-class performance and extreme blade life



Item No.	Outer Diameter	Bore Size	RPM	EAN	Inner	Outer
425201	100 mm (4 in.)	22.23-20-16 mm (7/8-3/4-5/8 in.)	14500	5479 6	12	36
425202	115 mm (4-1/2 in.)	22.23-20-16 mm (7/8-3/4-5/8 in.)	13200	5480 2	12	36
425203	125 mm (5 in.)	22.23-20-16 mm (7/8-3/4-5/8 in.)	12200	5481 9	12	36
425205	180 mm (7 in.)	22.23-20-16 mm (7/8-3/4-5/8 in.)	8500	5482 6	12	24
425206	230 mm (9 in.)	22.23-20-16 mm (7/8-3/4-5/8 in.)	6600	5483 3	12	24



DIAMOND CUP SINGLE



- Large Grinding segments with heat treated steel bodies which provides increases durability and wheel life
- Fast action on grinding granite, marble, tile, rock and concrete
- Smoothing Concrete or Field Stone
- Suitable for grinding machines and angle grinders

Item No.	Size	RPM	EAN	Inner	Outer
426001	115 x 22.23 mm (4-1/2 x 7/8 in.)	13300	69426292+	6	24
426003	125 x 22.23 mm (5 x 7/8 in.)	12200	0219 6	6	24



DIAMOND CUP DOUBLE



- Large Grinding segments with heat treated steel bodies which provides increases durability and wheel life
- 2x Faster action on grinding granite, marble, tile, rock and concrete
- Smoothing Concrete or Field Stone
- Suitable for grinding machines and angle grinders

Item No.	Size	RPM	EAN	Inner	Outer
426011	115 x 22.23 mm (4-1/2 x 7/8 in.)	13300	69426292+	6	24
426013	125 x 22.23 mm (5 x 7/8 in.)	12200	0221 9	6	24



DIAMOND CUP TURBO



- Supper Turbo Segmented Diamond Cups are designed for grinding concrete and field stone
- The turbo segment configuration allows for faster and soft material removal
- Surface finishing on concrete, screed and natural stone Can also be used for removal of glues and epoxies
- Brazed wave row segments for fast and smooth grinding with 5 mm segment height use wet or dry
- Suitable for grinding machines and angle grinders

Item No.	Size	RPM	EAN	Inner	Outer
426021	115 x 22.23 mm (4-1/2 x 7/8 in.)	13300	69426292+	6	24
426023	125 x 22.23 mm (5 x 7/8 in.)	12200	0492 3	6	24



VACUUM BRAZED DIAMOND DRILL BIT

- 1/4 in. Hex shank for power drills
- Suitable for high drilling speed, industry diamonds, long using life
- Filled with cutting gel, no additional cooling necessary, no time-consuming preparation
- For tiles, ceramics, stone ware, gneiss, granite, marble and slate



Item No.	Cutting DIA.	Cutting Depth	Shank	EAN 69743345+	Inner	Outer
425301	5 mm (3/16 in.)	32 mm (1-1/4 in.)	6.35 mm (1/4 in.)	5484 0	10	60
425303	6 mm (1/4 in.)	40 mm (1-9/16 in.)	6.35 mm (1/4 in.)	5485 7	10	60
425305	8 mm (5/16 in.)	40 mm (1-9/16 in.)	6.35 mm (1/4 in.)	5486 4	10	60
425307	10 mm (3/8 in.)	40 mm (1-9/16 in.)	6.35 mm (1/4 in.)	5487 1	10	60
425309	12 mm (1/2 in.)	40 mm (1-9/16 in.)	6.35 mm (1/4 in.)	5488 8	10	60
425311	14 mm (9/16 in.)	40 mm (1-9/16 in.)	6.35 mm (1/4 in.)	5489 5	10	60

DIAMOND COATED HOLE SAW

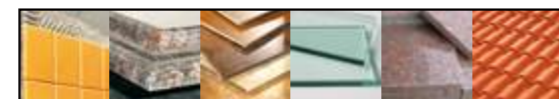
- High quality industrial diamond
- Ø 19 to 35 mm for wallplug holes, water pipes, waste pipes and Ø 38 to 100 mm for waste pipes, electrical boxes and sockets, for porcelain, granite worktops, tiles, quarry tiles, ceramics, natural stone slabs, marble.
- Attention: Only usable with water cooling



Item No.	Cutting DIA.	Cutting Depth	EAN 69743345+	Inner	Outer
425360	19 mm (3/4 in.)	38 mm (1-1/2 in.)	5432 1	12	48
425362	22 mm (7/8 in.)	38 mm (1-1/2 in.)	5433 8	12	48
425364	25 mm (1 in.)	38 mm (1-1/2 in.)	5434 5	12	48
425366	29 mm (1-1/8 in.)	38 mm (1-1/2 in.)	5435 2	12	48
425368	32 mm (1-1/4 in.)	38 mm (1-1/2 in.)	5436 9	12	48
425370	35 mm (1-3/8 in.)	38 mm (1-1/2 in.)	5437 6	12	48
425372	38 mm (1-1/2 in.)	38 mm (1-1/2 in.)	5438 3	12	48
425374	44 mm (1-3/4 in.)	38 mm (1-1/2 in.)	5439 0	12	48
425376	50 mm (2 in.)	38 mm (1-1/2 in.)	5440 6	6	36
425378	54 mm (2-1/8 in.)	38 mm (1-1/2 in.)	5441 3	6	36
425380	64 mm (2-1/2 in.)	38 mm (1-1/2 in.)	5442 0	6	36
425382	67 mm (2-5/8 in.)	38 mm (1-1/2 in.)	5443 7	6	36
425384	76 mm (3 in.)	38 mm (1-1/2 in.)	5444 4	6	36
425386	82 mm (3-1/4 in.)	38 mm (1-1/2 in.)	5445 1	6	36
425388	89 mm (3-1/2 in.)	38 mm (1-1/2 in.)	5446 8	6	36
425390	100 mm (4 in.)	38 mm (1-1/2 in.)	5447 5	6	36

VACUUM BRAZED DIAMOND HOLE SAW

- M14 x2 thread for angle grinders
- Suitable for high drilling speed, industry diamonds, long using life
- Filled with cutting gel, no additional cooling necessary, no time-consuming preparation
- For tiles, ceramics, stone ware, gneiss, granite, marble and slate



Item No.	Cutting DIA.	Cutting Depth	Shank	EAN 69743345+	Inner	Outer
425321	6 mm (1/4 in.)	35 mm (1-3/8 in.)	M14	5491 8	12	48
425323	8 mm (5/16 in.)	35 mm (1-3/8 in.)	M14	5492 5	12	48
425325	10 mm (3/8 in.)	35 mm (1-3/8 in.)	M14	5493 2	12	48
425327	12 mm (1/2 in.)	35 mm (1-3/8 in.)	M14	5494 9	12	48
425329	14 mm (9/16 in.)	35 mm (1-3/8 in.)	M14	5495 6	12	48
425331	20 mm (13/16 in.)	45 mm (1-3/4 in.)	M14	5496 3	6	36
425333	25 mm (1 in.)	45 mm (1-3/4 in.)	M14	5497 0	6	36
425335	30 mm (1-3/8 in.)	45 mm (1-3/4 in.)	M14	5498 7	6	36
425337	35 mm (1-3/8 in.)	45 mm (1-3/4 in.)	M14	5499 4	6	36
425339	38 mm (1-1/2 in.)	45 mm (1-3/4 in.)	M14	5500 7	6	36



9 PC DIAMOND COATED HOLE SAW SET

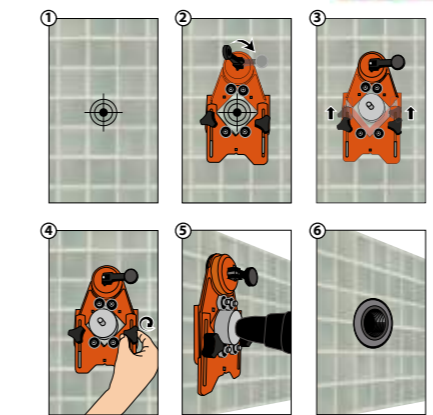
- 19, 22, 29, 38, 51, 57 mm
- 1 pc arbor 1/2 in.-20 UNF
- 1 pc adapter
- 1 pc masonry pilot drill bit



Item No.	Size	EAN 69743345+	Inner	Outer
425392	19, 22, 29, 38, 51, 57 mm	5450 5	6	24

DRILLING GUIDE FOR DIAMOND HOLE SAWS

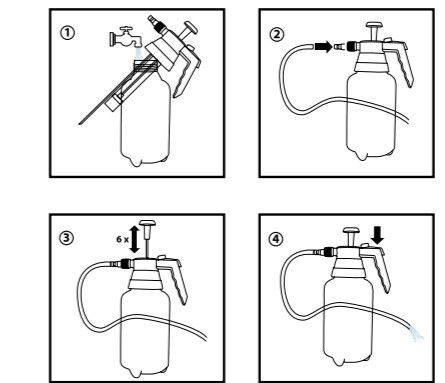
- For hole saws 4 to 83 mm accurately positioning.
- Two knobs to lock slider, one lever to engage suction



Item No.	Size	EAN 69743345+	Inner	Outer
425394	4-83 mm	5451 2	6	24

WATERING-CAN FOR DIAMOND HOLE SAWS

- For cooling down diamond hole saws through drilling process
- Water capacity: 1 litre
- Water hose included



Item No.	Size	EAN 69743345+	Inner	Outer
425396	1 Litre	5452 9	0	8

ARBOR FOR DIAMOND COATED HOLE SAW

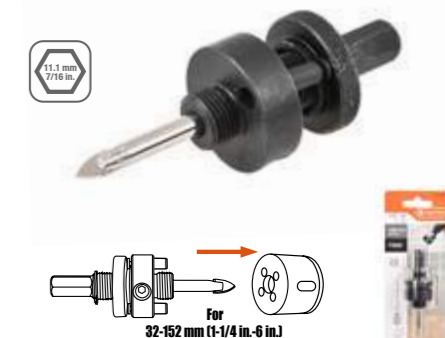
- Tungsten carbide pilot drill bit



Item No.	For hole saw size	EAN 69743345+	Inner	Outer
425398	19-29 mm (3/4 in.-1-1/8 in.)	5448 2	10	60

ARBOR FOR DIAMOND COATED HOLE SAW

- Tungsten carbide pilot drill bit



Item No.	For hole saw size	EAN 69743345+	Inner	Outer
425399	32-152 mm (1-1/4 in.-6 in.)	5449 9	10	60



Special Saw Blade design

- engineered with carbide tips, and the design helps to provide precise, smooth cutting performance

Thinner kerf

- provides faster cuts and less waste

CIRCULAR SAW BLADES

Tungsten Carbide blade tips

- a micrograin formulation for increasing impact damage resistance

Hard steel blade body

- delivers accuracy and resists bending and deflection for true cuts

434637

185 mm
7-1/4 in.

TUNGSTEN CARBIDE

40 TEETH

Ø20 mm

MAX. RPM 8,000

2.2 mm

1.4 mm

MODEL WOOD

- WOOD**
- ALUMINUM**
- METAL**
- FIBRE CEMENT**

CIRCULAR SAW BLADES

- K20 ATB Caride teeth provides longer life and faster cutting speed.
- Suitable for all kinds of wood: Hardwoods, Softwoods, MDF, Plywood, Chipboard, etc.

UPGRADED

Item No.	Outer Diameter	Kerf (mm)	Blade Thickness (mm)	Arbor (mm)	Teeth Quantity	Tungsten Carbide Tip	Tooth Grind	Hook Angle	Model	Max RPM	EAN 69426292 (A) 69743345 (B)	Inner	Outer
434368	115 mm (4-1/2 in.)	2.2	1.1	22.23	48	K30 (YG8)	ATB	15-18°	Circular Saw	13200	B + 5334 8	12	36
434424	160 mm (6-1/4 in.)	2.2	1.4	20	24	K30 (YG8)	ATB	15-18°	Circular Saw	9000	A + 5589 5	12	36
434431	165 mm (6-1/2 in.)	2.2	1.4	20	24	K30 (YG8)	ATB	15-18°	Circular Saw	9000	A + 7262 5	12	36
435019	180 mm (7 in.)	2.4	1.4	20	24	K30 (YG8)	ATB	15-18°	Circular Saw	8000	A + 2651 2	12	36
435022	180 mm (7 in.)	2.4	1.4	20	40	K30 (YG8)	ATB	15-18°	Circular Saw	8000	A + 2652 9	12	36
434624	185 mm (7-1/4 in.)	2.2	1.4	20	24	K30 (YG8)	ATB	15-18°	Circular Saw&Miter Saw	8000	A + 5590 1	12	36
434636	185 mm (7-1/4 in.)	2.2	1.4	20	36	K30 (YG8)	ATB	15-18°	Circular Saw&Miter Saw	8000	A + 5591 8	12	36
434637	185 mm (7-1/4 in.)	2.2	1.4	20	40	K30 (YG8)	ATB	15-18°	Circular Saw&Miter Saw	8000	A + 8396 6	12	36
434646	185 mm (7-1/4 in.)	2.2	1.4	25.4	60	K30 (YG8)	ATB	15-18°	Circular Saw&Miter Saw	8000	A + 7194 9	12	36
434736	210 mm (8-1/4 in.)	2.2	1.4	30	36	K30 (YG8)	ATB	15-18°	Miter Saw&Table Saw	7000	A + 5593 2	12	36
434848	216 mm (8-1/2 in.)	2.2	1.5	30	48	K30 (YG8)	ATB	15-18°	Miter Saw&Table Saw	7000	A + 5596 3	12	36
434860	216 mm (8-1/2 in.)	2.2	1.5	30	60	K30 (YG8)	ATB	15-18°	Miter Saw&Table Saw	7000	A + 5597 0	12	36
435023	230 mm (9 in.)	2.6	1.6	30	40	K30 (YG8)	ATB	15-18°	Circular Saw&Miter Saw	6000	A + 2653 6	12	24
435025	230 mm (9 in.)	2.6	1.6	30	60	K30 (YG8)	ATB	15-18°	Circular Saw&Miter Saw	6000	A + 2654 3	12	24
435026	250 mm (9-7/8 in.)	2.8	1.8	30	40	K30 (YG8)	ATB	15-18°	Miter Saw&Table Saw	5500	A + 2655 0	12	24
435060	250 mm (9-7/8 in.)	2.8	1.8	30	60	K30 (YG8)	ATB	15-18°	Miter Saw&Table Saw	5500	A + 2656 7	12	24
434936	254 mm (10 in.)	2.6	1.8	30	36	K30 (YG8)	ATB	15-18°	Miter Saw&Table Saw	5500	A + 5598 7	12	24
434948	254 mm (10 in.)	2.6	1.8	30	48	K30 (YG8)	ATB	15-18°	Miter Saw&Table Saw	5500	A + 5599 4	12	24
434960	254 mm (10 in.)	2.6	1.8	30	60	K30 (YG8)	ATB	15-18°	Miter Saw&Table Saw	5500	A + 5600 7	12	24
434980	254 mm (10 in.)	2.6	1.8	30	80	K30 (YG8)	ATB	15-18°	Miter Saw&Table Saw	5500	A + 5601 4	12	24
435068	300 mm (11-3/4 in.)	3.0	2.0	30	40	K30 (YG8)	ATB	15-18°	Miter Saw&Table Saw	4500	A + 2657 4	6	12
435078	300 mm (11-3/4 in.)	3.0	2.0	30	60	K30 (YG8)	ATB	15-18°	Miter Saw&Table Saw	4500	A + 2658 1	6	12
435160	315 mm (12-3/8 in.)	3.0	2.0	30	60	K30 (YG8)	ATB	15-18°	Table Saw	4000	A + 5603 8	6	12
435180	315 mm (12-3/8 in.)	3.0	2.0	30	80	K30 (YG8)	ATB	15-18°	Table Saw	4000	A + 5604 5	6	12
435248	400 mm (15-3/4 in.)	3.2	2.2	30	48	K30 (YG8)	ATB	15-18°	Table Saw	3500	A + 5605 2	6	12
435260	400 mm (15-3/4 in.)	3.2	2.2	30	60	K30 (YG8)	ATB	15-18°	Table Saw	3500	A + 5606 9	6	12

ALUMINUM CIRCULAR SAW BLADE



- NEW
- K30 TCG Caride teeth provides longer life and faster cutting speed.
- Suitable for aluminum cutting applications.

Item No.	Outer Diameter	Kerf (mm)	Blade Thickness (mm)	Arbor (mm)	Teeth Quantity	Tungsten Carbide Tip	Tooth Grind	Hook Angle	Model	Max RPM	EAN 69743345+	Inner	Outer
435501	165 mm (6-1/2 in.)	2.2	1.4	20	54	K30 (YG8)	TCG	-5°	Circular Saw	8000	5831 2	12	36
435503	185 mm (7-1/4 in.)	2.4	1.8	20	60	K30 (YG8)	TCG	-5°	Circular Saw&Miter Saw	7000	5832 9	12	36
435505	216 mm (8-1/2 in.)	2.5	1.8	30	48	K30 (YG8)	TCG	-4°	Miter Saw&Table Saw	6000	5833 6	12	36
435509	254 mm (10 in.)	2.4	1.8	30	80	K30 (YG8)	TCG	-4°	Miter Saw&Table Saw	5000	5835 0	12	24
435513	254 mm (10 in.)	2.8	2.0	25.4	100	K30 (YG8)	TCG	8°	Miter Saw&Table Saw	5000	5837 4	12	24
435515	254 mm (10 in.)	2.8	2.0	25.4	120	K30 (YG8)	TCG	0°	Miter Saw&Table Saw	5000	5838 1	12	24
435523	305 mm (12 in.)	3.2	2.2	30	100	K30 (YG8)	TCG	-5°	Miter Saw&Table Saw	4500	5842 8	6	12

METAL CIRCULAR SAW BLADE



- NEW
- P30 TCG Caride teeth provides longer life and faster cutting speed.
- Suitable for cutting various types of metal products including steel siding, roofing and steel studs.
- Laser cut blade for anti-kickback during cutting.

Item No.	Outer Diameter	Kerf (mm)	Blade Thickness (mm)	Arbor (mm)	Teeth Quantity	Tungsten Carbide Tip	Tooth Grind	Hook Angle	Model	Max RPM	EAN 69743345+	Inner	Outer
435601	136 mm (5-3/8 in.)	1.5	1.2	20	30	P30	TCG	0°	Circular Saw	4500	5845 9	12	36
435603	150 mm (6 in.)	2.0	1.6	20	32	P30	TCG	0°	Circular Saw	4000	5846 6	12	36
435605	185 mm (7-1/4 in.)	2.0	1.6	20	48	P30	TCG	0°	Circular Saw&Miter Saw	3500	5847 3	12	36
435607	254 mm (10 in.)	2.0	1.6	30	50	P30	TCG	0°	Miter Saw	2500	5848 0	12	24
435609	305 mm (12 in.)	2.2	1.8	30	60	P30	TCG	0°	Miter Saw	2000	5849 7	6	12

FIBRE CEMENT CIRCULAR SAW BLADE



- NEW
- Poly Crystalline Diamond (PCD) teeth provides longer life when cutting fibre cement sheeting of all densities.
- Stabiliser slots for reduced vibration while cutting.

Item No.	Outer Diameter	Kerf (mm)	Blade Thickness (mm)	Arbor (mm)	Teeth Quantity	Tungsten Carbide Tip	Tooth Grind	Hook Angle	Model	Max RPM	EAN 69743345+	Inner	Outer
435701	165 mm (6-1/2 in.)	1.8	1.2	20	4	PCD DIAMOND	FLAT	10°	Circular Saw	8000	5850 3	12	36
435703	185 mm (7-1/4 in.)	1.8	1.2	20	4	PCD DIAMOND	FLAT	10°	Circular Saw&Miter Saw	7000	5851 0	12	36
435705	254 mm (10 in.)	2.0	1.4	30	6	PCD DIAMOND	FLAT	10°	Miter Saw&Table Saw	5000	5852 7	12	24
435707	305 mm (12 in.)	2.2	1.6	25.4	8	PCD DIAMOND	FLAT	10°	Miter Saw&Table Saw	4500	5853 4	6	12

TACTIX SAW BLADE FEATURES



Teeth Per Inch Selection Guide							
3 TPI	6 TPI	8 TPI	10 TPI	14 TPI	18 TPI	24 TPI	GRIT
Wood							
				Thick Metal: 8 mm and more			
				Medium metal: 3-8 mm			
				Thin metal: 3 mm and less			
Abrasives							
ROUGH		CUT QUALITY				SMOOTH	
FAST		CUT SPEED				SLOW	

10 PC JIG SAW BLADE SET



- Fast cut for chipboard, MDF, plywood and thin metal

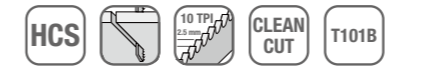
- Contents:
- 2 pc 436007 (≈T111C, HCS, 8 TPI, basic for wood)
 - 3 pc 436009 (≈T119B, HCS, 12 TPI, basic for wood)
 - 3 pc 436013 (≈T144D, HCS, 6 TPI, speed for wood)
 - 2 pc 436101 (≈T118A, HCS, 21 TPI, basic for metal)

Item No.	Description	EAN	Inner	Outer
436381	10 pc Jig Saw Blade Set - T-Shank	69426292+	5002 9	10 60

5 PC T-SHANK JIG SAW BLADES



- High carbon steel, straight and clean cut
- Ground teeth and back
- Suitable for chipboard, MDF, plywood, wood<30 mm and closed pipes/profiles<30 mm

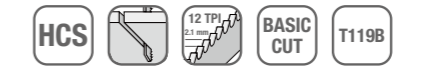


Item No.	Length	Work Length	EAN	Inner	Outer
436001	100 mm (4 in.)	75 mm (3 in.)	69426292+	2407 5	20 200

5 PC T-SHANK JIG SAW BLADES



- High carbon steel, straight cut
- Milled teeth
- Suitable for chipboard, MDF, plywood and wood<15 mm

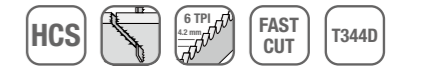


Item No.	Length	Work Length	EAN	Inner	Outer
436009	91 mm (3-9/16 in.)	67 mm (2-5/8 in.)	69426292+	2411 2	20 200

5 PC T-SHANK JIG SAW BLADES



- High carbon steel, straight and fast cut
- Ground teeth
- Suitable for chipboard, MDF, plywood and wood<100 mm



Item No.	Length	Work Length	EAN	Inner	Outer
436017	132 mm (5-1/4 in.)	107 mm (4-3/16 in.)	69426292+	2415 0	20 200

5 PC T-SHANK JIG SAW BLADES



- High carbon steel, straight and clean cut
- Ground teeth and back
- Suitable for chipboard, MDF, plywood and wood<45 mm

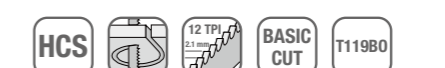


Item No.	Length	Work Length	EAN	Inner	Outer
436003	100 mm (4 in.)	75 mm (3 in.)	69426292+	2408 2	20 200

5 PC T-SHANK JIG SAW BLADES



- High carbon steel, curve cut
- Milled teeth
- Suitable for chipboard, MDF, plywood and wood<15 mm



Item No.	Length	Work Length	EAN	Inner	Outer
436011	82 mm (3-1/4 in.)	57 mm (2-1/4 in.)	69426292+	2412 9	20 200

5 PC T-SHANK JIG SAW BLADES



- High carbon steel, curve and clean cut
- Ground teeth and back
- Suitable for chipboard, MDF, plywood and wood<15 mm



Item No.	Length	Work Length	EAN	Inner	Outer
436019	82 mm (3-1/4 in.)	57 mm (2-1/4 in.)	69426292+	2416 7	20 200

10 PC JIG SAW BLADE SET



- Fast and clean cut for chipboard, MDF, plywood and thin metal

- Contents:
- 3 pc 436001 (≈T101B, HCS, 10 TPI, clean for wood)
 - 2 pc 436007 (≈T111C, HCS, 8 TPI, basic for wood)
 - 3 pc 436013 (≈T144D, HCS, 6 TPI, speed for wood)
 - 1 pc 436101 (≈T118A, HSS, 21 TPI, basic for metal)
 - 1 pc 436103 (≈T118B, HSS, 12 TPI, basic for metal)

Item No.	Description	EAN	Inner	Outer
436382	10 pc Jig Saw Blade Set - T-Shank	69426292+	5003 6	10 60

10 PC JIG SAW BLADE SET



- Fast and clean cut for chipboard, MDF, plywood and thin metal

- Contents:
- 3 pc 436251 (≈U101B, HCS, 10 TPI, clean for wood)
 - 2 pc 436257 (≈U111C, HCS, 8 TPI, basic for wood)
 - 3 pc 436263 (≈U144D, HCS, 6 TPI, speed for wood)
 - 1 pc 436301 (≈U118A, HSS, 21 TPI, basic for metal)
 - 1 pc 436303 (≈U118B, HSS, 12 TPI, basic for metal)

Item No.	Description	EAN	Inner	Outer
436386	10 pc Jig Saw Blade Set - U-Shank	69426292+	5005 0	10 60

10 PC JIG SAW BLADE SET



- Fast cut for chipboard, MDF, plywood and thin metal

- Contents:
- 2 pc 436257 (≈U111C, HCS, 8 TPI, basic for wood)
 - 3 pc 436259 (≈U119B, HCS, 12 TPI, basic for wood)
 - 3 pc 436263 (≈U144D, HCS, 6 TPI, speed for wood)
 - 2 pc 436301 (≈U118A, HCS, 21 TPI, basic for metal)

Item No.	Description	EAN	Inner	Outer
436385	10 pc Jig Saw Blade Set - U-Shank	69426292+	5004 3	10 60

5 PC T-SHANK JIG SAW BLADES



- High carbon steel, straight and clean cut
- Ground teeth and back
- Suitable for chipboard, MDF, plywood and wood<65 mm

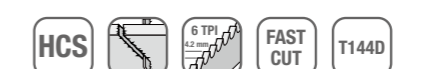


Item No.	Length	Work Length	EAN	Inner	Outer
436005	116 mm (4-1/2 in.)	91 mm (3-5/8 in.)	69426292+	2409 9	20 200

5 PC T-SHANK JIG SAW BLADES



- High carbon steel, straight and fast cut
- Ground teeth
- Suitable for chipboard, MDF, plywood and wood<50 mm



Item No.	Length	Work Length	EAN	Inner	Outer
436013	100 mm (4 in.)	75 mm (3 in.)	69426292+	2413 6	20 200

5 PC T-SHANK JIG SAW BLADES



- High carbon steel, straight and clean cut
- Ground teeth and back
- Reverse tooth for splinter free cuts on top on work piece
- Suitable for chipboard, MDF, plywood and wood<30 mm



Item No.	Length	Work Length	EAN	Inner	Outer
436021	100 mm (4 in.)	75 mm (3 in.)	69426292+	2417 4	20 200

5 PC T-SHANK JIG SAW BLADES



- High carbon steel, straight cut
- Milled teeth
- Suitable for chipboard, MDF, plywood and wood<50 mm



Item No.	Length	Work Length	EAN	Inner	Outer
436007	100 mm (4 in.)	75 mm (3 in.)	69426292+	2410 5	20 200

5 PC T-SHANK JIG SAW BLADES



- High carbon steel, curve and fast cut
- Ground teeth
- Suitable for chipboard, MDF, plywood and wood<50 mm



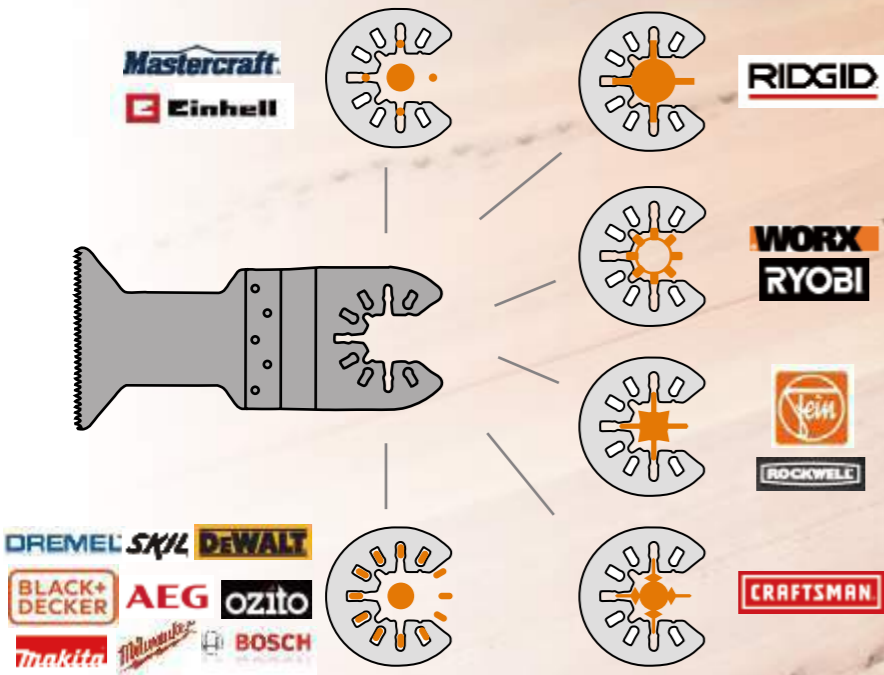
Item No.	Length	Work Length	EAN	Inner	Outer
436015	100 mm (4 in.)	75 mm (3 in.)	69426292+	2414 3	20 200





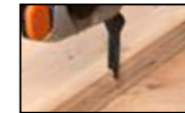
MULTI SAW BLADE

- Quick change function
- Universal fit system
- Compatible with numerous multi-tools



WOOD CUTTING METAL CUTTING MORTAR POLISHING GROUT REMOVAL WOOD GRINDING

MULTI SAW BLADE



HCS

- High carbon steel
- Suitable for wood, plasterboard and soft plastic
- Quick change function

Item No.	Work Size	Qty	EAN	Inner	Outer
437001	10 x 34 mm	3 pc	6163 6	10	60
437003	20 x 34 mm	3 pc	6164 3	10	60



MULTI SAW BLADE



HCS

- High carbon steel
- Suitable for wood, plasterboard and soft plastic
- Quick change function

Item No.	Work Size	Qty	EAN	Inner	Outer
437011	65 x 40 mm	1 pc	6168 1	10	60



MULTI SAW BLADE



BIM

- Bi-metal for long life
- Suitable for sheet metal, wood with nail, plastic and etc.
- Quick change function

Item No.	Work Size	Qty	EAN	Inner	Outer
437033	20 x 36 mm	1 pc	6172 8	10	60



MULTI SAW BLADE



HCS

- High carbon steel
- Suitable for wood, plasterboard and soft plastic
- Quick change function

Item No.	Work Size	Qty	EAN	Inner	Outer
437005	32 x 40 mm	3 pc	6165 0	10	60



MULTI SAW BLADE



HCS

- High carbon steel
- Provide for right angle cuts
- Suitable for wood, plasterboard and soft plastic
- Quick change function

Item No.	Work Size	Qty	EAN	Inner	Outer
437013	87 mm	1 pc	6169 8	10	60



MULTI SAW BLADE



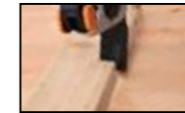
BIM

- Bi-metal for long life
- Suitable for sheet metal, wood with nail, plastic and etc.
- Quick change function

Item No.	Work Size	Qty	EAN	Inner	Outer
437035	28 x 48 mm	1 pc	6173 5	10	60



MULTI SAW BLADE



HCS

FAST CUT

- High carbon steel
- Suitable for wood, plasterboard and soft plastic
- Quick change function

Item No.	Work Size	Qty	EAN	Inner	Outer
437007	32 x 40 mm	1 pc	69426292 (A) 69708346 (B)	10	60
437008	32 x 40 mm	3 pc	B + 7803 1	10	60



MULTI SAW BLADE



HCS

- High carbon steel
- Suitable for removing carpet paint, tape, glue residue and mortar
- Quick change function

Item No.	Work Size	Qty	EAN	Inner	Outer
437021	52 x 28 mm	1 pc	7802 4	10	60



MULTI SAW BLADE



BIM

- Bi-metal for long life
- Suitable for sheet metal, wood with nail, plastic and etc.
- Quick change function

Item No.	Work Size	Qty	EAN	Inner	Outer
437037	32 x 40 mm	1 pc	6174 2	10	60



MULTI SAW BLADE



HCS

- High carbon steel
- Suitable for wood, plasterboard and soft plastic
- Quick change function

Item No.	Work Size	Qty	EAN	Inner	Outer
437009	44 x 40 mm	3 pc	6167 4	10	60



MULTI SAW BLADE



BIM

- Bi-metal for long life
- Suitable for sheet metal, wood with nail, plastic and etc.
- Quick change function

Item No.	Work Size	Qty	EAN	Inner	Outer
437031	10 x 34 mm	1 pc	6171 1	10	60



MULTI SAW BLADE



BIM

- Bi-metal for long life
- suitable for metal, wood, plastic and etc
- Quick change function

Item No.	Work Size	Qty	EAN	Inner	Outer
437039	10 x 33 mm	1 pc	7801 7	10	60



10 PC SANDING SHEETS



- Aluminum oxide, use with tri-base (detail) sanders, hook and loop backed



Item No.	Size	Grit	EAN 69426292+	Inner	Outer
446400	93 X 93 mm (3-3/4 X 3-3/4 in.)	50#	4112 6	20	120
446401	93 X 93 mm (3-3/4 X 3-3/4 in.)	80#	2593 5	20	120
446403	93 X 93 mm (3-3/4 X 3-3/4 in.)	120#	2594 2	20	120
446407	93 X 93 mm (3-3/4 X 3-3/4 in.)	240#	2595 9	20	120



10 PC SANDING DISCS



- Aluminum oxide, hook and loop backed



Item No.	Size	Grit	EAN 69426292+	Inner	Outer
446691	125 mm (5 in.)	50#	3038 0	20	120
446693	125 mm (5 in.)	80#	3044 1	20	120
446695	125 mm (5 in.)	120#	3052 6	20	120
446697	125 mm (5 in.)	240#	3053 3	20	120

10 PC SANDING DISCS



- Aluminum oxide, hook and loop backed



Item No.	Size	Grit	EAN 69426292 (A) 69743345 (B)	Inner	Outer
446701	125 mm (5 in.)	50#	A + 2600 0	20	120
446703	125 mm (5 in.)	80#	A + 2601 7	20	120
446705	125 mm (5 in.)	120#	A + 3957 4	20	120
446707	125 mm (5 in.)	240#	A + 3958 1	20	120
446709	125 mm (5 in.)	320#	B + 5111 6	20	120

10 PC SANDING DISCS



- Aluminum oxide, hook and loop backed



Item No.	Size	Grit	EAN 69426292+	Inner	Outer
446711	150 mm (6 in.)	50#	3084 7	20	120
446715	150 mm (6 in.)	120#	3086 1	20	120
446721	150 mm (6 in.)	240#	3087 8	20	120

10 PC SANDING DISCS



- Heated aluminium oxide, hook and loop backed
- Coated to reduce clogging
- For surface preparation in metal fabrication and automotive/boat refinishing workshops



Item No.	Size	Grit	EAN 69426292+	Inner	Outer
446733	150 mm (6 in.)	80#	4526 1	20	120
446741	150 mm (6 in.)	320#	4528 5	20	120

3 PC SANDING AND POLISHING SET



- 1pc 125 mm (5 in.) 80# sanding disc
- 1pc 125 mm (5 in.) lambswool polishing cap
- 1pc backing pad with 8mm round shank adaptor

Item No.	Size	EAN 69426292+	Inner	Outer
446911	3 pc	5962 6	10	60

BACKING PAD FOR DRILL



- With 6 mm shank



Item No.	Size	RPM	EAN 69426292+	Inner	Outer
446779	125 mm (5 in.)	2000	5485 0	10	60

FLAP DISC



- Bore size 22 mm (7/8 in.)
- Aluminum oxide
- For grinding and finishing on ferrous or non-ferrous metals



Item No.	Size	RPM	Grit	EAN 69426292+	Inner	Outer
446781	115 mm (4-1/2 in.)	18000	40#	3065 6	12	72
446783	115 mm (4-1/2 in.)	18000	60#	3066 3	12	72
446785	115 mm (4-1/2 in.)	18000	80#	3067 0	12	72
446797	125 mm (5 in.)	12200	40#	5479 9	12	72
446799	125 mm (5 in.)	12200	60#	5480 5	12	72
446801	125 mm (5 in.)	12200	80#	2602 4	12	72

ARBOR FOR BUFFING WHEELS



- For buffing wheels
- 12.7 mm (1/2 in.) Arbor
- 6 mm shank

Item No.	Size	EAN 69426292+	Inner	Outer
446901	Arbor for Buffing Wheels	2606 2	12	144

BACKING PAD VELCRO 50 mm QUICK CHUCK



- M14 Thread for grinding machine
- Round shank for PROTABLE drill
- Fit for all velcro back polishing accessories



Item No.	Size	RPM	EAN 69426292+	Inner	Outer
446773	50 mm (2 in.)	4500	7044 7	10	60

BACKING PAD VELCRO 125 mm QUICK CHUCK



- M14 Thread for grinding machine
- Round shank for PROTABLE drill
- Fit for all velcro back polishing accessories



Item No.	Size	RPM	EAN 69426292+	Inner	Outer
446775	125 mm (5 in.)	4500	7075 4	10	60

3 PC 75 mm (3 in.) SCRUB PAD VERY SOFT WHITE



- Window, Mirror, Furniture, Plastic

Item No.	Size	RPM	EAN 69426292+	Inner	Outer
446843.3W	75 mm (3 in.)	4500	8941 8	10	60

3 PC 75 mm (3 in.) SCRUB PAD SOFT BLUE



- Shower, Bathroom, Glass, Tile, Floor

Item No.	Size	RPM	EAN 69426292+	Inner	Outer
446843.3B	75 mm (3 in.)	4500	8942 5	10	60

3 PC 75 mm (3 in.) SCRUB PAD MEDIUM RED



- Cookware, Metal, Stainless Steel, Copper

Item No.	Size	RPM	EAN 69426292+	Inner	Outer
446843.3R	75 mm (3 in.)	4500	8943 2	10	60

3 PC 125 mm (5 in.) SCRUB PAD VERY SOFT WHITE



- Window, Mirror, Furniture, Plastic

Item No.	Size	RPM	EAN 69426292+	Inner	Outer
446845.3W	125 mm (5 in.)	4500	8944 9	10	60

3 PC 125 mm (5 in.) SCRUB PAD SOFT BLUE



- Shower, Bathroom, Glass, Tile, Floor

Item No.	Size	RPM	EAN 69426292+	Inner	Outer
446845.3B	125 mm (5 in.)	4500	8945 6	10	60

3 PC 125 mm (5 in.) SCRUB PAD MEDIUM RED



- Cookware, Metal, Stainless Steel, Copper

Item No.	Size	RPM	EAN 69426292+	Inner	Outer
446845.3R	125 mm (5 in.)	4500	8946 3	10	60

BUFFING WHEEL



- For buffing jewelry, brass and other fine materials

Item No.	Size	RPM	EAN	Inner	Outer
446851	100 mm (4 in.)	5000	69426292+ 2603 1	10	60

BUFFING WHEEL



- For buffing jewelry, brass and other fine materials

Item No.	Size	RPM	EAN	Inner	Outer
446855	150 mm (6 in.)	4000	69426292+ 2605 5	6	48

POLISHING CAP



- Lambswool & cotton
- For fine surface polishing
- Hook and loop backed

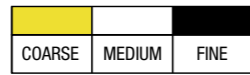
Item No.	Size	RPM	EAN	Inner	Outer
446860	125 mm (5 in.)	2000	69426292+ 5486 7	20	120



POLISHING SPONGE



Coarse Medium Fine



CUTTING LEVEL

2 PC POLISHING CAPS



- Lambswool & cotton
- For fine surface polishing

Item No.	Size	RPM	EAN	Inner	Outer
446861	180 mm (7 in.)	2000	69426292+ 3050 2	12	72
446865	240 mm (9-3/8 in.)	2000	69426292+ 3051 9	6	24

2 PC POLISHING CAPS



- Lambswool & cotton
- For fine surface polishing
- Hook and loop backed

Item No.	Size	RPM	EAN	Inner	Outer
446863	75 mm (3 in.)	2000	69708346 (A) 69426292 (B) A + 7693 8	12	72
446866	127 mm (5 in.)	2000	A + 7694 5	12	72
446867	180 mm (7 in.)	2000	B + 5943 5	12	72

POLISHING CAP



- Lambswool
- For fine surface polishing

Item No.	Size	RPM	EAN	Inner	Outer
446869	180 mm (7 in.)	2000	69426292+ 6016 5	0	50



- Hook and loop backed

Item No.	Size	RPM	EAN	Inner	Outer
446873	75 mm (3 in.) - Medium	2000	69708346 (A) 69426292 (B) A + 7695 2	6	24
446874	75 mm (3 in.) - Fine	2000	A + 7696 9	6	24
446876	127 mm (5 in.) - Medium	2000	A + 7697 6	6	24
446877	127 mm (5 in.) - Fine	2000	A + 7698 3	6	24
446878	180 mm (7 in.) - Coarse	2000	B + 5944 2	6	24
446879	180 mm (7 in.) - Medium	2000	B + 5945 9	6	24
446880	180 mm (7 in.) - Fine	2000	B + 5946 6	6	24

POLISHING SPONGE



Coarse Medium Fine



Item No.	Size	RPM	EAN	Inner	Outer
446881	150 mm (6 in.) - Coarse	4600	4532 2	6	24
446883	150 mm (6 in.) - Medium	4600	4533 9	6	24
446885	150 mm (6 in.) - Fine	4600	4534 6	6	24

POLISHING CUSHION-MEDIUM



- For fine surface polishing, with 6 mm shank

Item No.	Size	RPM	EAN	Inner	Outer
446897	125 mm (5 in.)	2000	69426292+ 5487 4	12	72

POLISHING CUSHION-MEDIUM



- For fine surface polishing

Item No.	Size	RPM	EAN	Inner	Outer
446899	175 mm (7 in.)	2000	69426292+ 5488 1	12	72



WIRE BRUSH - POWER DRILL

WIRE MATERIAL	WORKING SURFACE	METAL	CONCRETE	STAINLESS STEEL	ALUMINUM	WOOD	PVC	★★ Recommended ★ Acceptable
		<p>STEEL WIRE</p>	★★	★★	★	★		
<p>STAINLESS STEEL WIRE</p>	★★	★	★★	★				
<p>BRASS WIRE (Prevents spark from producing during polishing process)</p>	★★	★	★	★				
<p>NYLON WIRE</p>	★		★	★★	★★	★★		

CRIMPED WIRE WHEEL BRUSH


- 0.3 mm steel wire, 6 mm round shank
- Ideal for removing coating, rust, scale and weld splatter in hard to reach spaces.
- Use with portable and stationary drills



Item No.	Size	RPM	EAN	69426292 (A) 69708346 (B)	Inner	Outer
447305	50 mm (2 in.)	4500	A + 3059 5		6	36
447306	60 mm (2-3/8 in.)	4500	B + 7668 6		6	36
447307	75 mm (3 in.)	4500	A + 3060 1		6	36
447309	100 mm (4 in.)	4500	A + 3061 8		6	36

CRIMPED WIRE CUP BRUSH


- 0.3 mm steel wire, 6 mm round shank
- Crimped wire design provides flexibility for light to medium duty brushing action
- Ideal for removing coating, rust, scale and weld splatter on flat surfaces
- Use with portable and stationary drills



Item No.	Size	RPM	EAN	69426292+ 69708346	Inner	Outer
447325	50 mm (2 in.)	4500	3062 5		6	36
447327	75 mm (3 in.)	4500	3063 2		6	36

CRIMPED WIRE END BRUSH


- 0.3 mm steel wire, 6 mm round shank
- Crimped wire design provides flexibility for light to medium duty brushing action
- Ideal for removing coating, rust, scale and weld splatter in hard to reach spaces
- Use with portable and stationary drills



Item No.	Size	RPM	EAN	69426292 (A) 69708346 (B)	Inner	Outer
447322	12 mm (1/2 in.)	4500	B + 7671 6		12	72
447323	25 mm (1 in.)	4500	A + 4863 7		12	72

CRIMPED WIRE WHEEL BRUSH -STAINLESS STEEL WIRE


- 0.3 mm stainless steel wire, 6mm round shank
- Ideal for removing coating, rust, scale and weld splatter in hard to reach spaces.
- Use with portable and stationary drills



Item No.	Size	RPM	EAN	69708346+	Inner	Outer
447335	50 mm (2 in.)	4500	7675 4		6	36
447337	75 mm (3 in.)	4500	7676 1		6	36
447339	100 mm (4 in.)	4500	7677 8		6	36

CRIMPED WIRE CUP BRUSH -STAINLESS STEEL WIRE


- 0.3 mm stainless steel wire, 6 mm round shank
- Crimped wire design provides flexibility for light to medium duty brushing action
- Ideal for removing coating, rust, scale and weld splatter on flat surfaces
- Use with portable and stationary drills



Item No.	Size	RPM	EAN	69708346+	Inner	Outer
447329	50 mm (2 in.)	4500	7674 7		6	36

CRIMPED WIRE END BRUSH -STAINLESS STEEL WIRE


- 0.3 mm stainless steel wire, 6 mm round shank
- Crimped wire design provides flexibility for light to medium duty brushing action
- Ideal for removing coating, rust, scale and weld splatter in hard to reach spaces
- Use with portable and stationary drills



Item No.	Size	RPM	EAN	69708346+	Inner	Outer
447331	25 mm (1 in.)	4500	7883 3		12	72

CRIMPED WIRE WHEEL BRUSH -BRASS WIRE


- 0.3 mm brass wire, 6mm round shank
- Ideal for removing coating, rust, scale and weld splatter in hard to reach spaces.
- Use with portable and stationary drills



Item No.	Size	RPM	EAN	69708346+	Inner	Outer
447318	75 mm (3 in.)	4500	7670 9		6	36

CRIMPED WIRE CUP BRUSH -BRASS WIRE


- 0.3 mm brass wire, 6 mm round shank
- Crimped wire design provides flexibility for light to medium duty brushing action
- Ideal for removing coating, rust, scale and weld splatter on flat surfaces
- Use with portable and stationary drills



Item No.	Size	RPM	EAN	69708346+	Inner	Outer
447328	50 mm (2 in.)	4500	7673 0		6	36

CRIMPED WIRE END BRUSH -BRASS WIRE


- 0.3 mm brass wire, 6 mm round shank
- Crimped wire design provides flexibility for light to medium duty brushing action
- Ideal for removing coating, rust, scale and weld splatter in hard to reach spaces
- Use with portable and stationary drills



Item No.	Size	RPM	EAN	69708346+	Inner	Outer
447324	25 mm (1 in.)	4500	7882 6		6	36

NYLON WIRE WHEEL BRUSH


- #80 durable abrasive nylon wire, 6 mm round shank
- Ideal for spot and corner surface preparation on metal, PVC and wood.
- Use with portable and stationary drills



Item No.	Size	RPM	EAN	69708346+	Inner	Outer
447805	75 mm (3 in.)	4500	7690 7		6	36

NYLON WIRE CUP BRUSH


- #80 durable abrasive nylon wire, 6 mm round shank
- Ideal for flat surface preparation on metal, PVC and wood.
- Use with portable and stationary drills



Item No.	Size	RPM	EAN	69708346+	Inner	Outer
447803	50 mm (2 in.)	4500	7689 1		6	36

NYLON WIRE END BRUSH


- #80 durable abrasive nylon wire, 6 mm round shank
- Ideal for tight and narrow surface preparation on metal, PVC and wood.
- Use with portable and stationary drills



Item No.	Size	RPM	EAN	69708346+	Inner	Outer
447801	25 mm (1 in.)	4500	7688 4		12	72

KNOTTED WIRE WHEEL BRUSH


- 0.5 mm hardened steel wire, 6 mm round shank
- Twist knotted wire design provides less flexibility for heavy duty brushing action
- Ideal for bead weld preparation and confined areas
- Use with portable and stationary drills



Item No.	Size	RPM	EAN	69708346+	Inner	Outer
447601	75 mm (3 in.)	20000	7682 2		6	36

3 PC WIRE BRUSH SET-BRASS COATED STEEL WIRE


- 0.3 mm steel wire, 6 mm round shank
- Crimped wire design provides flexibility for light to medium duty brushing action
- Ideal for removing coating, rust, scale and weld splatter
- Use with portable and stationary drills
- 1 pc 25 mm wire end brush • 1 pc 50 mm wire cup brush • 1 pc 50 mm wire wheel brush

Item No.	Size	RPM	EAN	69708346+	Inner	Outer
447203	3 pc	4500	7657 0		10	60

4 PC WIRE BRUSH SET


- 0.3 mm steel wire, 6 mm round shank
- Crimped wire design provides flexibility for light to medium duty brushing action
- Ideal for removing coating, rust, scale and weld splatter
- 1 pc 250 mm knife brush • 1 pc 25 mm wire end brush • 1 pc 50 mm wire cup brush • 1 pc 50 mm wire wheel brush

Item No.	Size	RPM	EAN	69708346+	Inner	Outer
447204	4 pc	4500	7658 7		10	40

ABRASIVE TUBE BRUSH


- 0.3 mm steel wire, 8 mm round shank
- Ideal for cleaning, deburring and polishing of cylinders, tubes, pipes and bores, etc
- Use with portable drills or manually



Item No.	Size	EAN	69743345 (A) 69708346 (B)	Inner	Outer
447694	15 mm (5/8 in.)	A + 5271 6		10	60
447701	20 mm (3/4 in.)	B + 7684 6		12	48
447703	22 mm (7/8 in.)	B + 7685 3		12	48
447705	30 mm (1-1/8 in.)	B + 7686 0		12	48
447707	35 mm (1-3/8 in.)	B + 7687 7		12	48

5 PC WIRE BRUSH SET-BRASS COATED STEEL WIRE


- 0.3 mm steel wire, 6 mm round shank
- Crimped wire design provides flexibility for light to medium duty brushing action
- Ideal for removing coating, rust, scale and weld splatter
- Use with portable and stationary drills
- 1 pc 25 mm wire end brush • 1 pc 50 mm wire cup brush • 1 pc 75 mm wire cup brush • 1 pc 50 mm wire wheel brush • 1 pc 75 mm wire wheel brush

Item No.	Size	RPM	EAN	69708346+	Inner	Outer
447205	5 pc	4500	7659 4		10	40

4 PC WIRE BRUSH SET


- 0.3 mm steel wire, 6 mm round shank
- Crimped wire design provides flexibility for light to medium duty brushing action
- Ideal for removing coating, rust, scale and weld splatter
- 1 pc 28mm tube brush • 1 pc 25 mm wire end brush • 1 pc 75 mm wire cup brush • 1 pc 75 mm wire wheel brush

Item No.	Size	RPM	EAN	69743345+	Inner	Outer
447206	4 pc	4500	5270 9		10	40



WIRE BRUSH
-ANGLE GRINDER



CRIMPED WIRE CUP BRUSH



- 0.3 mm steel wire, M14 x 2 thread
- Crimped wire design provides flexibility for light to medium duty brushing action
- Ideal for removing coating, rust, scale and weld splatter on flat surfaces
- Use with angle grinders



Item No.	Size	RPM	EAN	69426292 (A) 69708346 (B)	Inner	Outer
447223	65 mm (2-1/2 in.)	12500	B + 7660 0		0	36
447225	75 mm (3 in.)	12500	A + 3058 8		0	36
447227	100 mm (4 in.)	8500	A + 4859 0		0	24
447229	125 mm (5 in.)	6500	B + 7661 7		0	24

CRIMPED WIRE CUP BRUSH - STAINLESS STEEL WIRE



- 0.3 mm stainless steel wire, M14 x 2 thread
- Crimped wire design provides flexibility for light to medium duty brushing action
- Ideal for removing coating, rust, scale and weld splatter on flat surfaces
- Use with angle grinders



Item No.	Size	RPM	EAN	69708346+	Inner	Outer
447253	60 mm (2-3/8 in.)	12500	7664 8		0	36
447255	75 mm (3 in.)	12500	7665 5		0	36
447257	100 mm (4 in.)	8500	7666 2		0	36

KNOTTED WIRE CUP BRUSH



- 0.5 mm hardened steel wire, M14 x 2 thread
- Twist knotted wire design provides less flexibility for heavy duty brushing action
- Ideal for removing coating, rust, scale and weld splatter on flat surfaces
- Use with angle grinders



Item No.	Size	RPM	EAN	69426292 (A) 69708346 (B)	Inner	Outer
447243	65 mm (2-1/2 in.)	12500	B + 7660 0		0	36
447245	75 mm (3 in.)	12500	A + 3058 8		0	36
447247	100 mm (4 in.)	8500	A + 4859 0		0	24

CRIMPED WIRE CUP BRUSH - BRASS WIRE



- 0.3 mm brass wire, M14 x 2 thread
- Crimped wire design provides flexibility for light to medium duty brushing action
- Ideal for removing coating, rust, scale and weld splatter on flat surfaces
- Use with angle grinders



Item No.	Size	RPM	EAN	69708346+	Inner	Outer
447435	60 mm (2-3/8 in.)	12500	7884 0		0	36
447437	75 mm (3 in.)	12500	7681 5		0	36
447439	100 mm (4 in.)	8500	7885 7		0	36

KNOTTED WIRE WHEEL BRUSH



- 0.5 mm hardened steel wire, M14 x 2 thread
- Twist knotted wire design provides less flexibility for heavy duty brushing action
- Ideal for bead weld preparation and confined areas
- Use with angle grinders



Item No.	Size	RPM	EAN	69426292 (A) 69708346 (B)	Inner	Outer
447264	100 mm (4 in.)	12500	A + 4862 0		0	36
447265	125 mm (5 in.)	10000	B + 7667 9		0	36

CRIMPED WIRE BEVEL BRUSH



- 0.3 mm steel wire, M14 x 2 thread
- Crimped wire design provides flexibility for light to medium duty brushing action
- Ideal for grooves, curves and corners, and for efficient action on irregular objects
- Use with angle grinders



Item No.	Size	RPM	EAN	69708346+	Inner	Outer
447603	100 mm (4 in.)	12500	7683 9		0	24

BENCH GRINDER BRUSHES



- 0.3 mm steel wire, 32 mm round bore
- Crimped wire design provides flexibility for light to medium duty brushing action
- Use with bench grinders



Item No.	Size	RPM	EAN	69708346+	Inner	Outer
447401	150 x 25 x 32 mm	6000	7678 5		6	24
447403	180 x 25 x 32 mm	6000	7679 2		4	12
447405	200 x 25 x 32 mm	4500	7680 8		4	12

CRIMPED WIRE WHEEL BRUSH - COATED BRASS WIRE



- 0.3 mm steel wire, M14 x 2 thread
- Crimped wire design provides flexibility for light to medium duty brushing action
- Ideal for bead weld preparation and confined areas
- Use with angle grinders



Item No.	Size	RPM	EAN	69743345+	Inner	Outer
447268	115 mm (4-1/2 in.)	12500	5272 3		0	36

FLAP DISC



- For use with portable power grinders
- For use on flat or contoured surfaces of wood, metal, plastic, rubber, stone etc.
- 6 mm shank

Item No.	Size	RPM	Grit	EAN 69426292+	Inner	Outer
446811	50 x 20 mm (2 x 3/4 in.)	12500	40#	3047 2	12	72
446813	50 x 20 mm (2 x 3/4 in.)	12500	80#	3048 9	12	72
446815	50 x 20 mm (2 x 3/4 in.)	12500	180#	3049 6	12	72

3 PC ROTARY RASP SET



HCS

- Made of high carbon steel
- For wood polishing

Item No.	Description	EAN 69426292+	Inner	Outer
447121	3 pc Rotary Rasp Set	3826 3	20	120

CLEAN & STRIP DISC



- Made of intertwined nylon woven cord with polyurethane coating
- Ideal for preparation and cleaning of welds, rust removal and removal of discoloration
- 6 mm shank

Item No.	Size	RPM	EAN 69426292+	Inner	Outer
446953	100 mm (4 in.) with Arbor	6000	2607 9	6	48

5 PC MOUNTED STONE SET



- 6 mm shank diameter
- For use on most metals

RPM
18000

Item No.	Description	EAN 69426292+	Inner	Outer
447125	5 pc Mounted Stone Set	4915 3	12	72

3 PC ROTARY FILE SET



HSS

- Made of high speed steel
- For steel polishing

Item No.	Description	EAN 69426292+	Inner	Outer
447123	3 pc Mounted Stone Set	3827 0	20	120

CLEAN & STRIP DISC



- Made of intertwined nylon woven cord with polyurethane coating
- Ideal for preparation and cleaning of welds, rust removal and removal of discoloration

Item No.	Size	RPM	EAN 69426292+	Inner	Outer
446955	100 mm (4 in.) with Arbor	6000	2608 6	10	60

72 PC ROTARY ACCESSORY SET



- Includes grinding points, polishing wheels, cutter/milling points, grinding wheels, cutting wheels, sanding drums, HSS drill bits and brush wheels

Item No.	Description	EAN 69426292+	Inner	Outer
447040	72 pc Rotary Accessory Set	3056 4	6	24



CLEAN & STRIP DISC



- Use with angle grinders
- Made of intertwined nylon woven cord with polyurethane coating
- Ideal for preparation and cleaning of welds, rust removal and removal of discoloration

Item No.	Size	RPM	EAN 69426292+	Inner	Outer
446957	100 mm (4 in.) - 16 mm bore	6000	2609 3	10	60
446958	100 mm (4 in.) - 22 mm bore	6000	6283 1	10	60

50 mm (2 in.) DRILL BRUSH YELLOW PE



- For cleaning Bathroom, Tile, Kitchen

1/4 in.

Item No.	Size	EAN 69426292+	Inner	Outer
447502	50 mm (2 in.)	5972 5	6	36

100 mm (4 in.) DRILL BRUSH YELLOW PE



- For cleaning Bathroom, Tile, Kitchen

1/4 in.

Item No.	Size	EAN 69426292+	Inner	Outer
447504	100 mm (4 in.)	6361 6	6	24

63 mm (2-1/2 in.) DRILL BRUSH YELLOW PE



- For cleaning Bathroom, Tile, Kitchen

1/4 in.

Item No.	Size	EAN 69426292+	Inner	Outer
447507	63 mm (2-1/2 in.)	7043 0	6	36

3 PC DRILL BRUSH SET



- 1 pc 84mm dome brush
- 1 pc 50mm wheel brush
- 1 pc 100mm wheel brush
- For cleaning Bathroom, tile, kitchen

NEW

1/4 in.

Item No.	Size	EAN 69743345+	Inner	Outer
447303	3 pc	5332 4	6	24

50 mm (2 in.) DRILL BRUSH WHITE PE SOFT WHITE



- For cleaning Glass, Furniture, Automobile

1/4 in.

Item No.	Size	EAN 69426292+	Inner	Outer
447502W	50 mm (2 in.)	8938 8	6	36

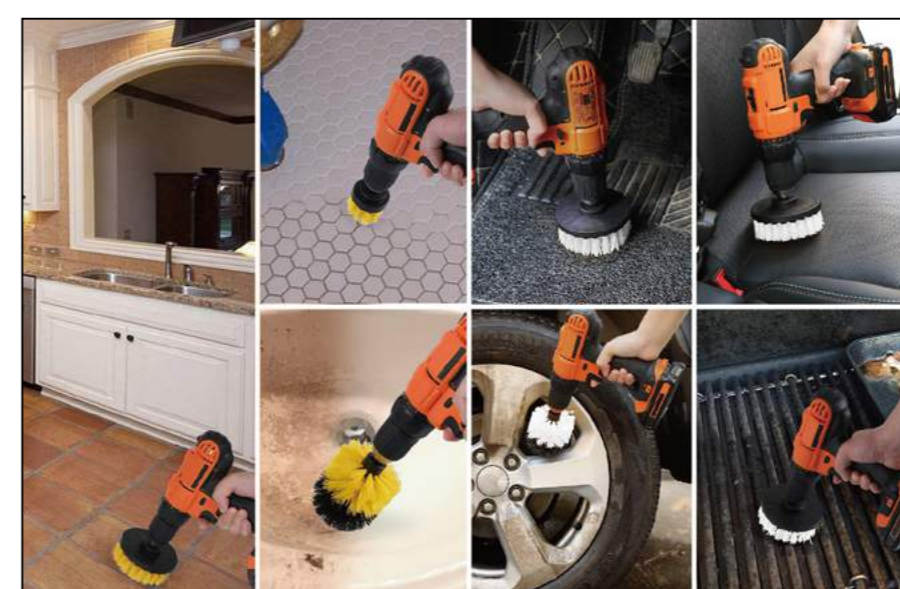
100 mm (4 in.) DRILL BRUSH WHITE PE SOFT WHITE



- For cleaning Glass, Furniture, Automobile

1/4 in.

Item No.	Size	EAN 69426292+	Inner	Outer
447504W	100 mm (4 in.)	8939 5	6	24



63 mm (2-1/2 in.) DRILL BRUSH WHITE PE Brush SOFT WHITE



- For cleaning Glass, Furniture, Automobile

1/4 in.

Item No.	Size	EAN 69426292+	Inner	Outer
447507W	63 mm (2-1/2 in.)	8940 1	6	36

5 PC BIT SETS - 50 mm (2 in.)


S2 50 mm
2 in.

Item No.	Tip Type	Size	EAN 69426292+	Inner	Outer
450207	Slot	5 mm	4479 0	24	144
450209	Slot	6 mm	4480 6	24	144
450231	PH	#1	4481 3	24	144
450232	PH	#2	4482 0	24	144

10 PC BIT SETS - 25 mm (1 in.)


S2 25 mm
1 in.

Item No.	Tip Type	Size	EAN 69426292+	Inner	Outer
450005	Slot	4 mm	3088 5	24	144
450007	Slot	5 mm	3089 2	24	144
450009	Slot	6 mm	3090 8	24	144
450030	PH	#0	3091 5	24	144
450031	PH	#1	3092 2	24	144
450032	PH	#2	3093 9	24	144
450033	PH	#3	3828 7	24	144
450036	PZ	#1	4465 3	24	144
450037	PZ	#2	4466 0	24	144
450038	PZ	#3	4467 7	24	144
450042	TORX	T-10	5464 5	24	144
450043	TORX	T-15	2793 9	24	144
450044	TORX	T-20	2794 6	24	144
450045	TORX	T-25	2795 3	24	144
450047	TORX	T-30	5466 9	24	144
450048	TORX	T-40	5467 6	24	144

20 PC BIT SETS - 25 mm (1 in.)


CR-V 25 mm
1 in.

Item No.	Tip Type	Size	EAN 69426292+	Inner	Outer
450427	PZ	#2	3436 4	12	72

10 PC BIT SETS - 50 mm (2 in.)


S2 50 mm
2 in.

Item No.	Tip Type	Size	EAN 69426292+	Inner	Outer
450309	Slot	6 mm	4484 4	12	72
450331	PH	#1	4485 1	12	72
450332	PH	#2	4486 8	12	72

20 PC BIT SETS - 25 mm (1 in.)


S2 25 mm
1 in.

Item No.	Tip Type	Size	EAN 69426292+	Inner	Outer
450105	Slot	4 mm	4468 4	12	72
450107	Slot	5 mm	4469 1	12	72
450109	Slot	6 mm	4470 7	12	72
450131	PH	#1	4472 1	12	72
450132	PH	#2	4473 8	12	72
450133	PH	#3	4474 5	12	72
450135	PZ	#0	4475 2	12	72
450136	PZ	#1	4476 9	12	72
450137	PZ	#2	4477 6	12	72
450138	PZ	#3	4478 3	12	72

25 PC BIT SETS - 25 mm (1 in.)


S2 25 mm
1 in.

Item No.	Tip Type	Size	EAN 69426292+	Inner	Outer
450162	PH	#2	5468 3	12	48
450167	PZ	#2	5470 6	12	48
450170	TORX	T-10	5472 0	12	48
450171	TORX	T-15	5473 7	12	48
450172	TORX	T-20	5474 4	12	48
450173	TORX	T-25	5475 1	12	48


ACCESSORIES FOR POWER TOOLS

QUICK CHANGE CHUCK


- Stainless steel, magnetic shaft holds bits securely



Item No.	Size	EAN 69426292+	Inner	Outer
453003	60 mm (2-3/8 in.)	3829 4	10	60

SCREW GUIDE

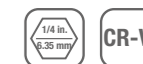

- Stainless steel outer sleeve slides over the screw and keeps it straight while driving
- Magnetic shaft holds bits securely



Item No.	Size	EAN 69426292+	Inner	Outer
453020	80 mm (3-1/8 in.)	8423 9	10	60
453021	120 mm (4-3/4 in.)	3831 7	20	120

3 PC POWER BIT SOCKET ADAPTOR


- 6.35 mm (1/4 in.) hex shank for using with quick chuck and extension
- Include hex to 1/4 in. Dr., hex to 3/8 in. Dr. and hex to 1/2 in. Dr.



Item No.	Size	EAN 69426292+	Inner	Outer
453063	1/4, 3/8, 1/2 in. Dr.	4803 3	10	60

QUICK CHANGE CHUCK


- Stainless steel, magnetic shaft holds bits securely



Item No.	Size	EAN 69426292+	Inner	Outer
453005	60 mm (2-3/8 in.)	3830 0	20	120

MAGNETIC EXTENSION


- One piece construction, stainless steel, magnetic shaft holds bits securely



Item No.	Size	EAN 69426292+	Inner	Outer
453041	60 mm (2-3/8 in.)	8479 6	10	60

QUICK CHANGE CHUCK


- Easy one-hand auto loading

Item No.	Size	EAN 69426292+	Inner	Outer
453007	65 mm (2-9/16 in.)	3830 0	10	60

MAGNETIC EXTENSION


- Stainless steel, magnetic shaft holds bits securely



Item No.	Size	EAN 69426292+	Inner	Outer
453042	60 mm (2-3/8 in.)	3832 4	20	120

MAGNETIC NUT DRIVER


Item No.	Size	Length	EAN 69426292+	Inner	Outer
453205	10 mm	48 mm (1-7/8 in.)	6773 7	20	120
453211	1/4 in.	48 mm (1-7/8 in.)	6774 4	20	120
453213	5/16 in.	48 mm (1-7/8 in.)	6775 1	20	120
453215	3/8 in.	48 mm (1-7/8 in.)	6776 8	20	120



KEYED DRILL CHUCK WITH CHUCK KEY



Item No.	Size	EAN 69426292+	Inner	Outer
453111	1.5-10 mm 3/8-24UNF	8482 6	6	36
453112	1.5-13 mm 1/2-20UNF	8483 3	6	36

KEYED DRILL CHUCK WITH CHUCK KEY



Item No.	Size	EAN 69426292+	Inner	Outer
453116	1.5-10 mm 3/8-24UNF	8484 0	6	36
453117	1.5-13 mm 1/2-20UNF	8485 7	6	36

DRILL CHUCK WITH SDS PLUS ADAPTER AND CHUCK KEY



Item No.	Size	EAN 69426292+	Inner	Outer
453122	1.5-10 mm 3/8-24UNF	8486 4	6	36
453123	1.5-13 mm 1/2-20UNF	8487 1	6	36

KEYED DRILL CHUCK WITH CHUCK KEY



Item No.	Size	EAN 69426292+	Inner	Outer
453134	0.8-10 mm 3-8/24UNF	8488 8	6	36

CHUCK KEY



• For drill chucks

Item No.	Size	EAN 69426292+	Inner	Outer
453101	6 mm	8480 2	12	72
453102	10 mm	8481 9	12	72
453103	13 mm	4914 6	12	72

Angle Adapter For Drill



• 90° • 1/4 in. hex shank

Item No.	Size	EAN 69743345+	Inner	Outer
453125	150 mm	5307 2	6	36

16 PC DRILL STRAP & BIT SET



451908 - Metric
 ⊕ #1, #2 x 2, #3;
 ⊖ 4 mm, 6 mm;
 ⊕ #1, #2 x 2, #3;
 ⊖ 3 mm, 5 mm, 6 mm;
 ⊖ T-15, T-20, T-25



Item No.	Description	EAN 69426292+	Inner	Outer
451908	16 pc Drill Strap & Bit Set - Metric	1649 0	6	36

CORDLESS SCREWDRIVER



- Contents:
- 10 pc 25 mm bits:
 - ⊕ #1, #2, #2
 - ⊖ T-10, T-15, T-20
 - ⊖ 5.5, 6.5 mm
 - ⊖ 3, 6 mm
- 4 pc 50 mm bits:
 - ⊕ #1, #2
 - ⊖ 5.5, 6.5 mm
- 1 pc 60 mm magnetic extension
- 2 pc hex shank Ti-coated HSS twist drill bits - 1.5, 3 mm
- 1 pc cordless screwdriver

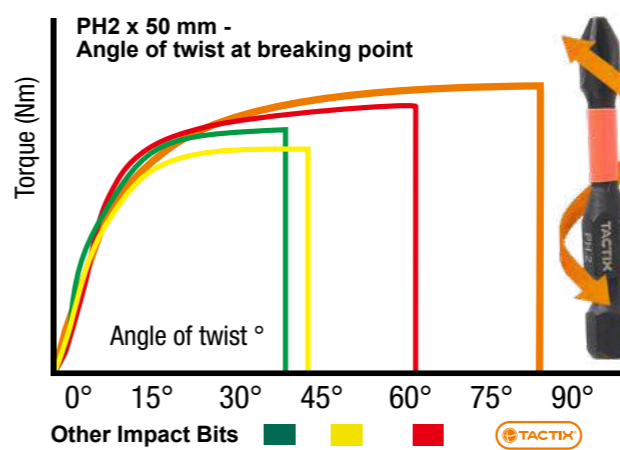
- Voltage: 3.6V Li-ion battery
- Input 220V (EU)
- Speed: 200RPM
- Max. Torque: 3.0N.M/33.9in-lbs
- Charge time: 3-5 hours
- 1/4 in. quick release chuck
- 6 positions adjustable torque setting
- LED light for working in dimly lit areas
- LED battery power indicator
- Left and right rotation
- Dual angle adjustment
- Compact and light weight design



Item No.	Size	EAN 69426292+	Inner	Outer
469001	18 pc	5079 1	6	12

IMPACT SCREWDRIVER BITS

TACTIX Impact bits achieve higher torsion compared to other Impact bits on the market



6.35 mm 1/4 in.

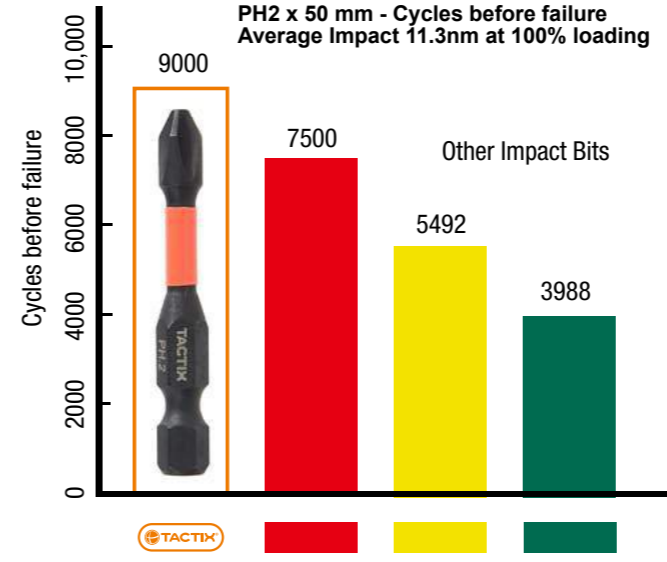
Torsion Zone

- **Torsion zone**
- Absorb torque peaks reducing stress at the bit tip
- Outstanding durability
- Energy saving impact distribution



IMPACT

Superior performance out last the competition



SQUARE IMPACT SCREWDRIVER BITS

Item No.	Size	Length	Quantity	EAN 69426292+	Inner	Outer
455301	#1	25 mm (1 in.)	3	6804 8	10	60
455302	#2	25 mm (1 in.)	3	6805 5	10	60
455303	#3	25 mm (1 in.)	3	6806 2	10	60
455312	#2	50 mm (2 in.)	2	6807 9	10	60
455322	#2	75 mm (3 in.)	1	6808 6	10	60

SLOTTED IMPACT SCREWDRIVER BITS

Item No.	Size	Length	Quantity	EAN 69426292+	Inner	Outer
455005	5.5 mm	25 mm (1 in.)	3	6788 1	10	60
455006	6.5 mm	25 mm (1 in.)	3	6789 8	10	60

HEX IMPACT SCREWDRIVER BITS

Item No.	Size	Length	Quantity	EAN 69426292+	Inner	Outer
455604	4 mm	25 mm (1 in.)	3	6821 5	10	60
455605	5 mm	25 mm (1 in.)	3	6822 2	10	60
455606	6 mm	25 mm (1 in.)	3	6823 9	10	60

PHILLIPS IMPACT SCREWDRIVER BITS

Item No.	Size	Length	Quantity	EAN 69426292+	Inner	Outer
455101	#1	25 mm (1 in.)	3	6790 4	10	60
455102	#2	25 mm (1 in.)	3	6791 1	10	60
455103	#3	25 mm (1 in.)	3	6792 8	10	60
455112	#2	50 mm (2 in.)	2	6793 5	10	60
455113	#3	50 mm (2 in.)	2	6794 2	10	60
455122	#2	75 mm (3 in.)	1	6795 9	10	60
455123	#3	75 mm (3 in.)	1	6796 6	10	60

POZI IMPACT SCREWDRIVER BITS

Item No.	Size	Length	Quantity	EAN 69426292+	Inner	Outer
455201	#1	25 mm (1 in.)	3	6797 3	10	60
455202	#2	25 mm (1 in.)	3	6798 0	10	60
455203	#3	25 mm (1 in.)	3	6799 7	10	60
455212	#2	50 mm (2 in.)	2	6800 0	10	60
455213	#3	50 mm (2 in.)	2	6801 7	10	60
455222	#2	75 mm (3 in.)	1	6802 4	10	60
455223	#3	75 mm (3 in.)	1	6803 1	10	60

TORX® IMPACT SCREWDRIVER BITS

Item No.	Size	Length	Quantity	EAN 69426292+	Inner	Outer
455402	T-15	25 mm (1 in.)	3	6809 3	10	60
455403	T-20	25 mm (1 in.)	3	6810 9	10	60
455404	T-25	25 mm (1 in.)	3	6811 6	10	60
455406	T-30	25 mm (1 in.)	3	6812 3	10	60
455408	T-40	25 mm (1 in.)	3	6813 0	10	60
455423	T-20	50 mm (2 in.)	2	6814 7	10	60
455424	T-25	50 mm (2 in.)	2	6815 4	10	60
455426	T-30	50 mm (2 in.)	2	6816 1	10	60
455428	T-40	50 mm (2 in.)	2	6817 8	10	60
455441	T-10	75 mm (3 in.)	1	7249 6	10	60
455442	T-15	75 mm (3 in.)	1	7250 2	10	60
455443	T-20	75 mm (3 in.)	1	7251 9	10	60
455444	T-25	75 mm (3 in.)	1	6818 5	10	60
455446	T-30	75 mm (3 in.)	1	6819 2	10	60
455448	T-40	75 mm (3 in.)	1	6820 8	10	60

Torx® is a Trademark of Textron Fastening Systems

IMPACT MAGNETIC NUT DRIVER

- Magnetic shaft holds bits securely
- Special material for impact function



Item No.	Size	Length	EAN 69426292+	Inner	Outer
456007	7 mm	50 mm (2 in.)	6824 6	10	60
456008	8 mm	50 mm (2 in.)	6825 3	10	60
456010	10 mm	50 mm (2 in.)	6826 0	10	60
456011	11 mm	50 mm (2 in.)	6827 7	10	60
456012	12 mm	50 mm (2 in.)	6828 4	10	60
456021	1/4 in.	50 mm (2 in.)	6829 1	10	60
456023	5/16 in.	50 mm (2 in.)	6830 7	10	60
456025	3/8 in.	50 mm (2 in.)	6831 4	10	60
456027	7/16 in.	50 mm (2 in.)	6832 1	10	60
456029	1/2 in.	50 mm (2 in.)	6833 8	10	60

IMPACT MAGNETIC BIT HOLDER

- Magnetic shaft holds bits securely



-
-

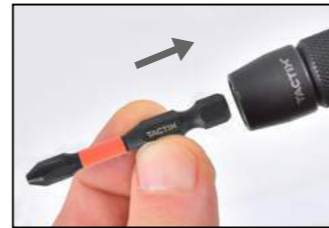
Item No.	Length	EAN 69426292+	Inner	Outer
456513	55 mm (2-3/16 in.)	6838 3	10	60

IMPACT QUICK CHUCK

- Easy one-hand auto loading



Item No.	Length	EAN 69426292+	Inner	Outer
456515	65 mm (2-9/16 in.)	6839 0	10	60



- Easy one-hand auto loading
- Push accessory into impact chuck to load



- Pull back sleeve to release accessory



IMPACT MAGNETIC BIT HOLDER

- Magnetic shaft holds bits securely
- Special material for impact function



Item No.	Length	EAN 69426292+	Inner	Outer
456511	60 mm (2-3/8 in.)	6837 6	10	60

IMPACT BIT SOCKET ADAPTOR

- Special material for impact function



Item No.	Size	Length	EAN 69426292+	Inner	Outer
456501	1/4 in.	50 mm (2 in.)	6834 5	10	60
456502	3/8 in.	50 mm (2 in.)	6835 2	10	60
456503	1/2 in.	50 mm (2 in.)	6836 9	10	60

IMPACT QUICK CHUCK

- Easy one-hand auto loading



Item No.	Length	EAN 69426292+	Inner	Outer
456517	150 mm (6 in.)	6840 6	10	60

BITS & ACCESSORIES

7 PC PHILLIPS BIT SET



Item No.	Description	EAN 69426292+	Inner	Outer
452001	7 pc PHILLIPS bit set	7240 3	12	48

11 PC PHILLIPS BIT SET



Item No.	Description	EAN 69426292+	Inner	Outer
452041	11 pc PHILLIPS bit set	7243 4	6	36

7 PC PHILLIPS IMPACT BIT SET



Item No.	Description	EAN 69426292+	Inner	Outer
455851	7 pc PHILLIPS impact bit set	7252 6	12	48

11 PC PHILLIPS IMPACT BIT SET



Item No.	Description	EAN 69426292+	Inner	Outer
455871	7 pc PHILLIPS impact bit set	7255 7	6	36

7 PC TORX BIT SET



Item No.	Description	EAN 69426292+	Inner	Outer
452003	7 pc TORX® bit set	7241 0	12	48

11 PC TORX BIT SET



Item No.	Description	EAN 69426292+	Inner	Outer
452043	11 pc TORX® bit set	7244 1	6	36

7 PC TORX IMPACT BIT SET



Item No.	Description	EAN 69426292+	Inner	Outer
455853	7 pc TORX® impact bit set	7253 3	12	48

11 PC TORX IMPACT BIT SET



Item No.	Description	EAN 69426292+	Inner	Outer
455873	11 pc TORX® impact bit set	7256 4	6	36

7 PC BIT SET



Item No.	Description	EAN 69426292+	Inner	Outer
452004	7 pc bit set	7242 7	12	48

11 PC BIT SET



Item No.	Description	EAN 69426292+	Inner	Outer
452044	11 pc bit set	7245 8	6	36

7 PC IMPACT BIT SET



Item No.	Description	EAN 69426292+	Inner	Outer
455854	7 pc impact bit set	7254 0	12	48

11 PC IMPACT BIT SET



Item No.	Description	EAN 69426292+	Inner	Outer
455874	11 pc impact bit set	7245 8	6	36



- + PHILLIPS
- SLOT
- + POZI
- * TORX
- HEX
- + TORX TAMPER

56 PC COLOR QUICK CHANGE DRIVER BIT SET



- 48 pc 25 mm bit S2
- 4 mm x 2, 5.5 mm x 2, 6.5 mm x 2
 - + #1 x 3, #2 x 3, #3 x 3
 - + #1 x 3, #2 x 3, #3 x 3
 - 3, 4, 5 mm
 - * T-10 x 2, T-15 x 2, T-20 x 2, T-25 x 2, T-27 x 2, T-30 x 2, T-40 x 2
 - + T-10, T-15, T-20, T-25, T-27, T-30, T-40
- 7 pc 75 mm bit S2
- 6 mm + #1, #2
 - + #2, #3 * T-20, T-25
- 1 pc stainless steel quick change chuck

Item No.	Description	EAN 69426292+	Inner	Outer
419856P	56 pc color bit set	5586 4	12	24

56 PC COLOR QUICK CHANGE DRIVER BIT SET



- 48 pc 25 mm bit S2
- 3 mm x 2, 4 mm x 2, 6.5 mm x 2
 - + #1 x 3, #2 x 3, #2R x 3, #3 x 3
 - + #1 x 3, #2 x 3, #3 x 3
 - 3, 4, 5 mm
 - * T-10 x 3, T-15 x 3, T-20 x 6, T-25 x 3, T-27, T-30, T-40
- 7 pc 75 mm bit S2
- + #2R * T-15, T-20, T-25, T-30, T-40
 - + #2
- 1 pc stainless steel quick change chuck

Item No.	Description	EAN 69426292+	Inner	Outer
419857P	56 pc color bit set	5586 4	12	24

29 PC COLOR QUICK CHANGE DRIVER BIT SET



- 21 pc 25 mm bit S2
- 3, 5.5 mm
 - + #1, #2 x 2, #3
 - + #1, #2 x 2, #3
 - 3, 4, 5, 6 mm
 - * T-10, T-15, T-20, T-20, T-25, T-30, T-40
- 6 pc 50 mm bit S2
- 6.5 mm + #1, #2
 - + #2 * T-20, T-25
- 1 pc bit adaptor
- 1 pc stainless steel quick change chuck

Item No.	Description	EAN 69426292+	Inner	Outer
419829P	29 pc color bit set	5939 8	12	48

32 PC COLOR QUICK CHANGE DRIVER BIT SET



- 30 pc 25 mm bit S2
- 3, 4, 5.5, 6.5 mm
 - + #0, #1 x 2, #2 x 2, #3 x 2
 - + #0, #1 x 2, #2 x 2, #3 x 2
 - 3, 4, 5, 6 mm
 - * T-10, T-15, T-20, T-20, T-25, T-25, T-30, T-40
- 1 pc bit adaptor
- 1 pc stainless steel quick change chuck

Item No.	Description	EAN 69426292+	Inner	Outer
419832P	32 pc color bit set	5585 7	12	48

IMPACT SCREWDRIVER BITS

Extremely long lifetime
Unique bit design and high tech multi-stage production process ensure unrivalled service life of bit

Torsion zone
UTorsion area absorbs torque peaks which reduces stress at the tip during heavy loading

Exclusive material
Specially modified material composition exclusively developed for MXMTORQ

Save energy
Bit design gives even power distribution, no energy wasted in heavy loading

28 PC IMPACT BIT SET



- 21 x
- 5.5, 6.5 mm
 - + #1, #2 x 5, #3
 - + #1, #2 x 3, #3
 - * T-15, T-20, T-25, T-25, T-25, T-30, T-40
- 1 x
- 6 x
- + #2, #3 * T-20, T-25
 - #2 ○ #2

Item No.	Description	EAN 69426292+	Inner	Outer
455828P	28 pc Impact Bit Set	6736 2	12	48

31 PC IMPACT BIT SET



- 30 x
- 5.5, 6.5 mm
 - + #1, #2 x 6, #3 x 2
 - + #1, #2 x 4, #3 x 2
 - * T-15, T-20, T-25, T-25, T-30, T-40
 - #1, #2, #3
 - 4, 5, 6 mm
- 1 x

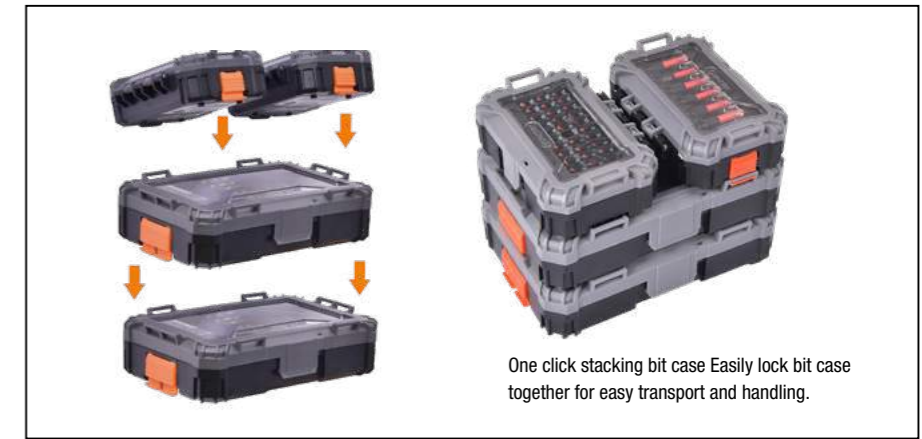
Item No.	Description	EAN 69426292+	Inner	Outer
455831P	31 pc Impact Bit Set	6737 9	12	48

36 PC IMPACT BIT SET



- 24 x
- 5.5, 6.5 mm
 - + #1, #2, #2, #2, #3
 - + #1, #2, #2, #3
 - * T-15, T-20, T-20, T-25, T-25, T-30, T-40
 - #1, #2, #3
 - 4, 5, 6 mm
- 6 x
- + #2, #3
 - + #2
 - * T-20, T-25
 - #2
- 2 x
- + #2 * T-25
- 1 x
- 2 x
- 7, 8 mm
- 1 x
- 1/4 in. Dr.

Item No.	Description	EAN 69426292+	Inner	Outer
455836P	36 pc Impact Bit Set	6736 6	6	24



One click stacking bit case Easily lock bit case together for easy transport and handling.



WELDING ACCESSORIES & CONSUMABLES



MIG TORCH CONTACT TIP BINZEL

MIG

- Bronze material
- Binzel type replacement tips for MIG welders using (Binzel type) torches

Item No.	Size	Qty	EAN 69708346+	Inner	Outer
591001	0.6 mm	5 pc	7534 4	12	144
591002	0.8 mm	5 pc	7535 1	12	144
591003	0.9 mm	5 pc	7536 8	12	144

MIG TORCH CONTACT TIP TWECO

MIG

- Bronze material
- Tweco type replacement tips for MIG welders using (Tweco type) torches

Item No.	Size	Qty	EAN 69708346+	Inner	Outer
591004	0.6 mm	5 pc	7537 5	12	144
591005	0.8 mm	5 pc	7538 2	12	144
591006	0.9 mm	5 pc	7539 9	12	144

OXY FLINT LIGHTER

- Cup type lighter allows for fast, easy ignition. Replaceable flint.

Item No.	Size	Qty	EAN 69708346+	Inner	Outer
591007	193 mm	1 pc	7540 5	6	48

OXY TIP CLEANING SET

- Contents: 13pc tip cleaning set: 6, 7, 8, 10, 12, 14, 15, 16, 17, 18, 22, 24, 26 mm; 1pc mini file
- Removes carbon build up and keep tips clean

Item No.	Size	Qty	EAN 69708346+	Inner	Outer
591009	75 mm	14 pc	7542 9	12	144

OXY TIP CLEANING SET

- Contents: 12pc tip cleaning set: 7, 8, 10, 12, 14, 15, 16, 17, 18, 22, 24, 25 mm; 1pc mini file
- Removes carbon build up and loose slag

Item No.	Size	Qty	EAN 69708346+	Inner	Outer
591010	100 mm	13 pc	7543 6	6	96

REPLACEMENT OXY FLINTS

- Replacement flints for Tactix flint lighter 591007.

Item No.	Size	Qty	EAN 69708346+	Inner	Outer
591008	12 mm	10 pc	7541 2	12	144

ELECTRODE HOLDER

300 AMP

- Brass plated mouth
- Fully insulated

Item No.	Amperage	Electrode diameter	Qty	EAN 69708346+	Inner	Outer
591011	300 AMP	6.4 mm max.	1 pc	7544 3	6	36

ELECTRODE HOLDER

500 AMP

- Brass mouth (long working life)
- Fully insulated

Item No.	Amperage	Electrode diameter	Qty	EAN 69708346+	Inner	Outer
591012	500 AMP	9.0 mm max.	1 pc	7545 0	6	36

ELECTRODE HOLDER

300 AMP

- Brass plated mouth
- Fully insulated

Item No.	Amperage	Electrode diameter	Qty	EAN 69708346+	Inner	Outer
591013	300 AMP	6.4 mm max.	1 pc	7546 7	6	36

ELECTRODE HOLDER

300 AMP

- Brass mouth (long working life)
- Fully insulated

Item No.	Amperage	Electrode diameter	Qty	EAN 69708346+	Inner	Outer
591014	300 AMP	6.4 mm max.	1 pc	7547 4	6	36

ELECTRODE HOLDER

500 AMP

- Brass plated mouth
- Fully insulated

Item No.	Amperage	Electrode diameter	Qty	EAN 69708346+	Inner	Outer
591015	500 AMP	9.0 mm max.	1 pc	7548 1	6	36

ELECTRODE HOLDER

500 AMP

- Brass mouth (long working life)
- Fully insulated

Item No.	Amperage	Electrode diameter	Qty	EAN 69708346+	Inner	Outer
591016	500 AMP	9.0 mm max.	1 pc	7549 8	6	36

EARTH CLAMP



300 AMP

- Brass plated clamp mouth
- Replacement Earth Clamp to fit most welding machines

Item No.	Amperage	Qty	EAN 69708346+	Inner	Outer
591017	300 AMP	1 pc	7550 4	6	36

EARTH CLAMP



500 AMP

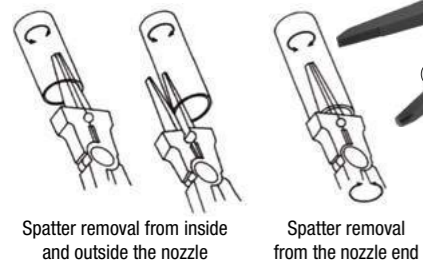
- Brass plated clamp mouth
- Replacement Earth Clamp to fit most welding machines

Item No.	Amperage	Qty	EAN 69708346+	Inner	Outer
591041	500 AMP	1 pc	7017 2	6	36



GAS SHIELDED WELDING PLIERS

1. Wire drawing out
2. Tip removal and installation
3. Hammering
4. Wire cutting
5. Spring loaded for easy opening and closing
6. Nozzle removal and installation
7. Insulation bushing removal and installation



Item No.	Size	Qty	EAN 69708346+	Inner	Outer
591021	215 mm	1 pc	7554 2	6	36

CHIPPING HAMMER



- Dual head / Spring handle

Item No.	Size	Qty	EAN 69708346+	Inner	Outer
591019	500 g	1 pc	7552 8	6	24

WELDING TROLLY



Item No.	Height	Length	Width	Qty	EAN 69708346+	Inner	Outer
591018	625 mm	370 mm	525 mm	1 pc	7551 1	0	1

- Sturdy all metal construction
- 50 kg capacity
- Front caster wheels for easy maneuverability
- Built in tool storage
- Built in cable holders

ELECTRODE STORAGE HOLDER



- Max Temperature: 120°C
- Protects from moisture
- Avoid flux chipping

Item No.	Capacity	Electrode Length	Qty	EAN 69708346+	Inner	Outer
591023	4.5 kg	350 mm	1 pc	7556 6	0	10

4 METRE TIG TORCH & CABLE



TIG

- Rating: 150A DC, 120A AC
- Duty cycle: 60%
- Electrodes: 0.5-2.4mm

Item No.	Description	EAN 69708346+	Inner	Outer
591022	4 Metre TIG Torch & Cable	7555 9	0	5

4 PC TIG TORCH ACCESSORY SET



TIG

- Contents: 1pc long back cap, 1pc collet body, 1pc collet, 1pc ceramic nozzle

Item No.	Qty	EAN 69708346+	Inner	Outer
591024	4 pc	7557 3	12	144

MIG TORCH GAS NOZZEL



MIG

- Binzel type replacement tips for MIG welders using (Binzel type) torches

Item No.	Size	Qty	EAN 69708346+	Inner	Outer
591020	12 mm	1 pc	7553 5	12	144

GAS DIFUSER MIG BINZEL



MIG

- Brass material
- Binzel type
- Suitable for use with MIG welders

Item No.	Qty	EAN 69708346+	Inner	Outer
591025	1 pc	7558 0	12	144

GAS DIFUSER MIG TWECO



MIG

- Brass material
- Tweco type
- Suitable for use with MIG welders

Item No.	Qty	EAN 69743345+	Inner	Outer
591032	1pc	5512 0	12	144

TEFLON MIG LINER



MIG

- Binzel type
- Size: 0.8 mm to 1.0 mm
- Replaceable liner for aluminium welding
- Can be used with MIG wires

Item No.	Size	Qty	EAN 69708346+	Inner	Outer
591026	3.3 m	1pc	7559 7	12	24

WIRE BRUSH



- Steel wire
- 4 x 18 wires
- Used to clean for welding

Item No.	Size	Qty	EAN 69426292+	Inner	Outer
724003	175 mm (7 in.)	1 pc	3337 4	6	24

WOOD HANDLE WIRE BRUSH



- Steel wire
- 4 x 16 wires
- Used to clean for welding

Item No.	Size	Qty	EAN 69426292+	Inner	Outer
724104	280 mm (11 in.)	1 pc	3338 1	12	48

MAGNETIC WELDING HOLDER



• 45°, 90°, 135°

Item No.	Size	Pull Force	Qty	EAN	Inner	Outer
591027	76 mm (3 in.)	11 kg (25 lbs.)	1 pc	69708346+	10	60

MAGNETIC WELDING HOLDER



• 45°, 90°, 135°

Item No.	Size	Pull Force	Qty	EAN	Inner	Outer
591028	100 mm (4 in.)	22 kg (50 lbs.)	1 pc	69708346+	6	36

MAGNETIC WELDING HOLDER



• 45°, 90°, 135°

Item No.	Size	Pull Force	Qty	EAN	Inner	Outer
591029	125 mm (5 in.)	33 kg (75 lbs.)	1 pc	69708346+	6	24

MAGNETIC WELDING HOLDER



• 45°, 90°, 135°

Item No.	Size	Pull Force	Qty	EAN	Inner	Outer
591030	150 mm (6 in.)	44 kg (100 lbs.)	1 pc	69708346+	6	12

4PCS MINI MAGNETIC WELDING HOLDERS



• 45°, 90°, 135°

Item No.	Size	Pull Force	Qty	EAN	Inner	Outer
591031	60 x 50 mm (2-3/8 x 2 in.)	4 kg (9 lbs.)	4 pc	69708346+	10	40



MILD STEEL WIRE



- Conforms AWS ER70S-6 standard
- For Gas MIG Welding
- Suits most popular brands of MIG Welders

Item No.	Weight	Diameter	Qty	EAN	Inner	Outer
592001	0.8 kg	0.6 mm	1 pc	69708346+	6	18

MILD STEEL WIRE



- Conforms AWS ER70S-6 standard
- For Gas MIG Welding
- Suits most popular brands of MIG Welders

Item No.	Weight	Diameter	Qty	EAN	Inner	Outer
592002	0.8 kg	0.8 mm	1 pc	69708346+	6	18

STAINLESS STEEL WIRE



- Conforms AWS ER-308 standard
- For Gas MIG Welding
- Suits most popular brands of MIG Welders

Item No.	Weight	Diameter	Qty	EAN	Inner	Outer
592003	1.0 kg	0.8 mm	1 pc	69708346+	6	18

GASLESS FLUX CORE MILD STEEL WIRE



- Conforms AWS E71T-GS standard
- Suits most popular brands of MIG Welders

Item No.	Weight	Diameter	Qty	EAN	Inner	Outer
592005	0.45 kg	0.8 mm	1 pc	69708346+	6	24

GASLESS FLUX CORE MILD STEEL WIRE



- Conforms AWS E71T-GS standard
- Suits most popular brands of MIG Welders

Item No.	Weight	Diameter	Qty	EAN	Inner	Outer
592006	0.45 kg	0.9 mm	1 pc	69708346+	6	24

ALUMINIUM WIRE



- Conforms AWS ER5356 standard
- For Gas MIG Welding
- Suits most popular brands of MIG Welders

Item No.	Weight	Diameter	Qty	EAN	Inner	Outer
592004	0.5 kg	0.8 mm	1 pc	69708346+	6	24

MILD STEEL WIRE



- Conforms AWS ER70S-6 standard
- For Gas MIG Welding
- Suits most popular brands of MIG Welders

Item No.	Weight	Diameter	Qty	EAN	Inner	Outer
592007	5 kg	0.6 mm	1 pc	69708346+	0	4
592008	5 kg	0.8 mm	1 pc	69708346+	0	4

GASLESS FLUX CORE MILD STEEL WIRE



- Conforms AWS E71T-GS standard
- Suits most popular brands of MIG Welders

Item No.	Weight	Diameter	Qty	EAN	Inner	Outer
592012	4.5 kg	0.8 mm	1 pc	69708346+	0	4
592013	4.5 kg	0.9 mm	1 pc	69708346+	0	4

TUNGSTEN RODS



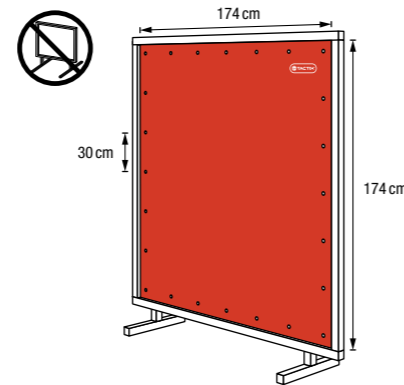
- Conforms AWS A5.12
- 2% Thoriated Tungsten Electrode
- Used with DC Current to weld mild and stainless steel
- Red tip ground finish

Item No.	Diameter	Length	Qty	EAN	Inner	Outer
592015	1.6 mm	175 mm	10 pc	69708346+	12	48
592016	2.4 mm	175 mm	10 pc	69708346+	12	48

WELDING SCREEN



- Welding screen used to reduce glare and protect welders
- Specially formulated vinyl 16mil (0.4 mm) thick
- Certified UV resistant and flame retardant
- Kevlar stitching
- Edges with eyelets at 300 mm intervals
- Welding frame not included



Item No.	Size	Qty	EAN	Inner	Outer
593001	174 x 174 mm	1 pc	69708346+	6	12

A series of horizontal dashed lines for writing, overlaid on a faint background image of a modern glass building with a canopy entrance.

A series of horizontal dashed lines for writing, overlaid on a faint background image of a modern glass building with a canopy entrance.



MERIDIAN
美瑞实业

Meridian International Co., Ltd.

1886 Laiyin Road, Songjiang, Shanghai, China

Tel: (021) 3763 3311

Fax: (021) 3763 3322

www.meridianintl.com

Distributed by

CATALOGUE 2024/25



www.tactixtools.com